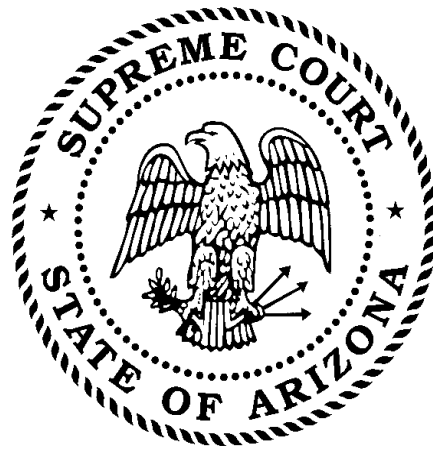


FARE JUSTIS Information Flow

JUSTIS - CMS Data Design Information



Original Date: August 8, 2003

Last Updated Date: Aug. 25, 2020

Version: 3.9

Table of Contents

1	Data Interface Summary of Changes	3
2	Data Warehouse Extract Elements and Attributes.....	6
	FARE Transactions –High Level	6
3	Status Definitions	7
4	FARE –Status Transactions	8
5	FARE ‘Real Time’ and Batch Processing –High Level.....	11
6	FARE –Process Flows (Draft)	12
7	FARE MQ Message Format	19
8	FARE Transaction Model –Detailed (Stage Tables)	20
9	Table Data Elements and Attributes.....	21
	Legend	21
	Lookup Tables.....	22
	Base Tables	24
10	Transaction Error Codes.....	38
11	Full FARE Assumptions	40
12	Issues and Concerns.....	41
13	Statewide Standard Tables	42
	Table: Court Type Lookup Table	43
	Table: Case Category Lookup Table.....	43
	Table: Party Type Lookup Table	44
	Table: Class of Offense Lookup Table	45
	Table: Charge Case Type Lookup Table.....	45
	Table: Citation Type Lookup Table.....	50
	Table: Disposition Code Lookup Table.....	51
	Table: Sentence Code Lookup Table	53
	Table: Country Code Lookup Table.....	54

1 Data Interface Summary of Changes

Date of Change	Description of Change
August 8, 2003	Original Document
August 11, 2003	Addition of Transaction Types Addition of FARE Transactions Addition of 'Real Time' and Batch Process Addition of "Description" in Charge Table (Detail Model)
August 18, 2003	Incorporated changes from File Layout Meeting
August 25, 2003	Addition of 'FARE MQ Messaging' Section Updated Model and Field Tables Updated Case Party Types Listing
September 5, 2003	Addition of 'FARE –Status Transactions'
September 8, 2003	Change in Model Addition of 'Initial Appearance Date' to fr_citn Change in the keys for fr_chrg Update 'FARE –Status Transaction' Section Update 'FARE 'Real Time' and Batch Processing
September 11, 2003	Change in Model Move Driver License Number and State to fr_party Addition of 'Transaction Error Codes' Section Addition of 'Full FARE Assumptions' Section Update in 'Class of Offense' table Update in 'Case Category' table
September 18, 2003	Addition of 'Issues and Concerns' Section Reformat of 'Table Elements and Attributes' Section Update of 'Status Definitions' Section Addition to 'Statewide Standard Tables' Added 'Disposition Code' Lookup table
September 24, 2003	Update of 'FARE –Status Transactions' Update 'FARE Real-Time and Batch Processing –High Level' Update 'FARE MQ Message Format' Update 'FARE Transaction Model –Detailed (Stage Tables) Update 'Table Data Elements and Attributes' Update 'Fr_Cscrg' Table Attributes Update 'Fr_Party' Table Attributes
October 1, 2003	Changes discussed during the September 30, 2003 Meeting Update 'Fr_Cscrg' Table Attributes Update 'Fr_Party' Table Attributes Addition of 'Country Code' Table
October 30, 2003	Addition of 'Table of Contents' Addition of 'Citation Agency Code Lookup Table' Change 'Citation Agency ORI' to 'Citation Agency'
November 12, 2003	Addition of 'Add' for the 'Transaction Action' in MQ Message Format Addition of 'Appr_On_By_Ind' in fr_case table Addition of 'Recall_flg' in fr_party Removal of 'Contract Indicator' in fr_cntrs table Changed definition of 'Violation Date' in fr_cscrg table
December 4, 2003	Citation_Number and Citation_Agency to Key fields in fr_cscrg table. Change in Model and table attributes. Added 'P*' to Key properties. Primary Key but can be Null.
December 29, 2003	Remove of "current_flg" from fr_paddr table Update of Citation_Agency fields to char(3) and unique per court. Removal of Citation Agency Look up Table
January 29, 2004	Added "Payment Type" to fr_obgtn_xaction for FARE VENDOR Payment Type

Date of Change	Description of Change
March 2, 2004	Updated Model to include fields updateable by 'fr_stat' transaction Addition of 'Contract Status' in fr_cntrct table Remove 'Clearing House Number' from fr_obgtn Addition of 'Confirmation Number' in fr_obgrn in the Model Changed Value of 'Special Collection Flag' (Y = In Special Collection) Update of 'Cease' Transactions Addition of Phoenix Municipal Error Codes
July 26, 2004	Updated Party and Person tables to include Suffix formatting (Pg 25 and 27) Updated FARE Assumptions to include a Suffix and Last Name formatting (Pg 35).
October 29, 2004	Update of "TTEAP Flag" with Y / N / W (W = Waiver) Update of document page formatting
February 22, 2005	Addition to 'Full FARE Assumption' Section. Addition of number 3 and 4 dealing with TTEAP Waiver and Holds This will also be added to the Business Specifications
July 20, 2005	Update of definition of 'ACS' Update of MVD Reject Field in the fr_rjct
October 14, 2005	Addition of a new Table called fr_fees Update of the Model to reflect the new table Update of Table Elements and Attributes.
November 9, 2007	Added Contract indicator to Fr_Party transaction Corrected field order in Fr_Party transaction.
December 12, 2007	Corrected old notes on fr_citn table, which is not used between the courts and Justis. Also added Contract Indicator notes to section on status'.
January 9, 2009	Added layout for Fr_Event transaction
February 24, 2009	Updated table values for current standard values
March 2, 2010	Updated fr_obgtn table to remove Court payments are reported as blank (reported as 'C')
March 2, 2010	Updated fr_obgtn table to indicate confirmation number is "R *" and used for WEB/IVR payments only
March 2, 2010	Updated 'FARE Real-time and batch processing-high level' section to reflect dispositions are included in batch transactions instead of real-time
March 2, 2010	Included in 'FARE-Status transactions' section that recall = N will not resend a case to FARE once it has been recalled. Added that the entire case must be reloaded to accomplish this, with the fr_party recall flag (recall_flg) = 'N'
March 2, 2010	Removed 'Reactivate', 'Cease 1', 'Cease 2' and 'Cease 3' from the status definitions section due to non-use and no set functionality for these actions in the data-warehouse
March 11, 2010	Updated return codes in the Fr_Rjcts transaction to reflect current values. Marked the TIP Set Flag field in the Fr_Evnts transaction as "Not Used". Marked the Fr_Fees transaction as "Not used at this time".
April 25, 2016	Change Format description for Citation Number and Citation Agency fields in the fr_cscrg transaction to include a Space if no value was being loaded to the fields.
July 18, 2016	Inserted Note for all transactions concerning Case Num 4 integer field's maximum value. Important for older cases using last two digits of the year if the entire field length is being used. Ex: 9100327210 will exceed the maximum value of 2147483647 that the integer field can hold.
August 30, 2016	Updated format for Source System Transaction Number to be Int (10) from Char (4) and update the Payment Type field in the fr_obgtn field to be Char (1).

Date of Change	Description of Change
Sept. 26, 2016	<p>Updated MQ header format section to specify that either the "-" or "/" characters can be used in the time-date stamp field. Previously only the "-" was listed as an acceptable character.</p> <p>Also in the MQ header format section, specified that the court number needs to be all four digits, for example "0745" instead of "745".</p> <p>Replaced "ACS" with "Xerox" where appropriate.</p>
April 5, 2017	Replaced "Xerox" with FARE Vendor where appropriate
April 24, 2017	Updated Court Receipt definition in Fr_Obgtn transaction from Int (10) to Char (10)
June 28, 2018	Updated document for field description updates for the fr_party TIP Flag, Special Collections flag and Contract flag. Updated field description for the fr_obgtn Restitution Balance and Payment Type fields. Removed fr_event and replaced with fr_roa transaction for inbound event transactions from the court to the AOC.
January 22, 2019	Updated the links for the code standardization tables and the ARS statewide violation tables found on page 41.
February 15, 2019	Removed the links for the code standardization tables and the ARS statewide violation tables found on page 41. These tables are being updated. New links will be included as soon as they are ready.
June 17, 2019	Updated Special Collection Flag comment in fr_evnts transaction to reflect the "E" for the collection trigger for Enhanced FARE.
June 24, 2019	Updated fr_cntrs transaction with new email and phone # fields. Added Contract Eligibility field in the fr_party transaction.
August 25, 2020	Updated fr_roa transaction header name so the ROA is lower case.

2 Data Warehouse Extract Elements and Attributes

FARE Transactions –High Level

Pre-Implementation

- Charge Lookup fr_chrg
- Judge Lookup fr_judge

New

- Case fr_case
- Case Charge fr_cscrg
- Party fr_party
- Party Address fr_paddr
- Person fr_prsn

Update

- Case fr_case
- Case Charge fr_cscrg
- Party fr_party
- Party Address fr_paddr
- Person fr_prsn
- Status Indicators fr_stat
- Events fr_evnts
- Charge Lookup fr_chrg
- Judge Lookup fr_judge

Payment

- Obligation Adjustments fr_obgtn
-

Fees

- Fee Allocation fr_fees

TTEAP Reject

- Close / No Match TTEAP fr_rjcts

Sequence of Transactions

fr_chrg
fr_case
fr_person
fr_party

fr_cscrg

fr_paddr
fr_cntrs

fr_obgln
fr_evnts
fr_stat

fr_rjcts
fr_fees

Status Definitions

- Suspend Flag
 - "Suspends" Active Collection Effort
 - There are 2 Types (a) Indefinite or (b) Until X date
 - Would Stop Noticing
 - Would "Freeze" at current collection level and not move to the next
- Recall Flag
 - Case-party is permanently removed from all collection processing. Acts like a 'Cease 2'
- TTEAP Flag
 - Removes from TTEAP only
- TIP Flag
 - Removes from TIP or designates restitution is part of the case balance.
- Web/IVR Removal Flag
 - Removes from Web/IVR only
- Special Collection Flag
 - Sends / Removes from Special Collections at FARE VENDOR
- Contract Indicator
 - Indicates if the court has placed a case on contract, or if the contract has been removed from the case

3 FARE –Status Transactions

NOTE → In the initial load, data will be sent to the fr_party table. Once the fr_party table is populated, updates to the “Status Flags” will be done with transactions from the fr_stat table. Based upon what information is sent in the fr_stat table, “Flags” in the fr_party table will be activated.

Suspend Flag

Value: Y / N

Transaction Value = ‘Y’ Will place a suspend on all active collection efforts on the case including noticing. All collections activity will cease and “freeze” the case at the current level. TTEAP holds are not lifted.

Transaction Value = ‘N’ Will lift the suspension placed on the case, and collection and/or noticing activity will resume where it left off prior to the suspension being placed.

Recall Flag

Value: Y/N

Transaction Value = ‘Y’ Will permanently remove the record from all collections processing, sanctions and payment options.

Transaction Value = ‘N’ This value must be set to “N” when assigning new cases to FARE.

***Note: After the case has been recalled from FARE (transaction value = ‘Y’) you **cannot** re-assign the case to FARE by changing the value to ‘N’ (transaction value = ‘N’). The case must be resent in its entirety with the fr_party transaction recall flag (recall_flg) field = ‘N’.*

TTEAP Flag

Value: Y/N/W

If **Transaction Value = ‘Y’**, the record is in TTEAP. There was a match at MVD and the TTEAP flag has been set.

If **Transaction Value = ‘N’**, the record is not in TTEAP or the TTEAP flag is removed at MVD (if this is the only record).

If **Transaction Value = ‘W’**, the TTEAP enforcement has been Waived for that Case/Party record for the court.

TIP Flag

Value: Y / N

If **Transaction Value = ‘Y’**, the record is in/sent to TIP.

If **Transaction Value = ‘N’**, the record is not in TIP or the record is being “Pulled Out” of TIP.

If **Transaction Value = ‘R’**, the record is marked as a restitution case for the TIP claim for auto-TIP courts.

Web/IVR Removal Flag

Value: Y / N

If **Transaction Value = ‘Y’**, the record is removed from the Web/IVR systems.

If **Transaction Value = ‘N’**, the record follows established business rule of when information is displayed on Web/VR systems.

Special Collections Flag

Value: Y / N

If **Transaction Value = ‘Y’**, the record follows established business rules for Special Collection processing at FARE VENDOR.

If **Transaction Value = ‘N’**, the record is removed from Special Collections processing.

If **Transaction Value = ‘Q’**, the record is referred to enhanced FARE with only the Delinquency Fee assessed to the case.

Contract Indicator Flag

Value: Y / N

If **Transaction Value = 'Y'**, the record stops collections processing and releases a TTEAP hold if applicable.

If **Transaction Value = 'N'**, the record resumes standard processing at FARE VENDOR.

If **Transaction Value = 'C'**, the record follows established business rules for payment contract processing at VENDOR for a FARE CAP case.

Cease1

Suspend Flag	Value: Y
Web/IVR Removal Flag	Value: Y
Special Collections Flag	Value: N

With Suspend = 'Y' – Web/IVR Removal = 'Y' – Special Collections Flag = 'N', this will act like a Cease1. With these status transactions, the Collection lifecycle will stop and the records will be removed from the Web/IVR system. All other enforcement flags (TIP and TTEAP) stay as they were.

Cease2

Suspend Flag	Value: Y
Web/IVR Removal Flag	Value: Y
TIP Flag	Value: N
TTEAP Flag	Value: N
Special Collections Flag	Value: N

With Suspend = 'Y' - Web/IVR Removal = 'Y' – TIP = 'N' – TTEAP = 'N' – Special Collections Flag = 'N', this will act like a Cease2. There will need to be four (5) transactions send through the fr_stat table. With these status transactions, the Collection lifecycle will stop, the records will be removed from the Web/IVR system, record will be removed from TIP, and MVD TTEAP clear transactions will be sent (if this is the only case),

Cease3

Suspend Flag	Value: Y
TIP Flag	Value: N
TTEAP Flag	Value: N
Special Collections Flag	Value: N

With Suspend = 'Y' – TIP = 'N' – TTEAP = 'N' – Special Collections Flag = 'N', this will act like a Cease3. With these status transactions, the Collection lifecycle will stop, the records will be removed TIP, MVD TTEAP clear transactions will be sent (if this is the only case), and records will still be displayed on the Web/IVR following the established business rules of when information is displayed.

4 FARE 'Real Time' and Batch Processing –High Level

'Real Time' Transaction

Changes or Additions of:

*Case Charge table associated with existing cases in FARE

Status (Suspend, TTEAP, TIP, Special Collections)

Monetary / Non Monetary adjustments

* Change to changes in Charge Lookup table

Batch Transactions

*New Cases

Notice Events

Dispositions

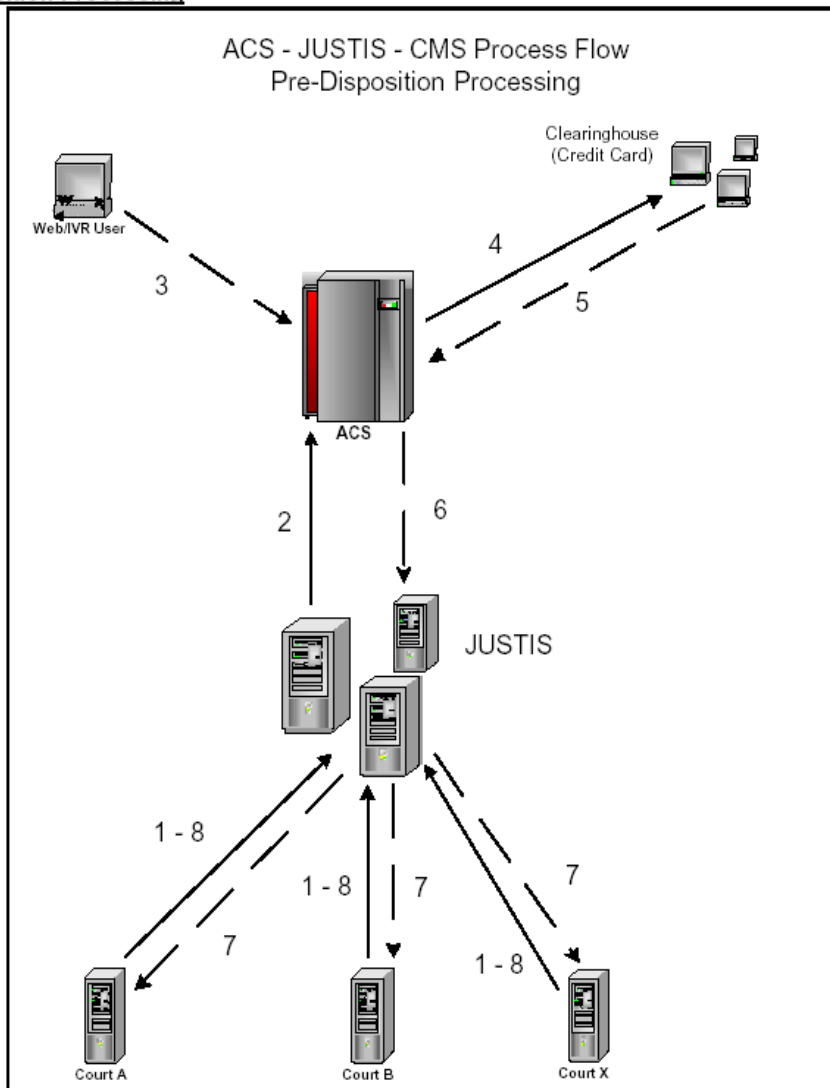
Updates to: Address, Party/Person information

Fee Allocation Information

* New cases with payments

5 FARE –Process Flows (Draft)

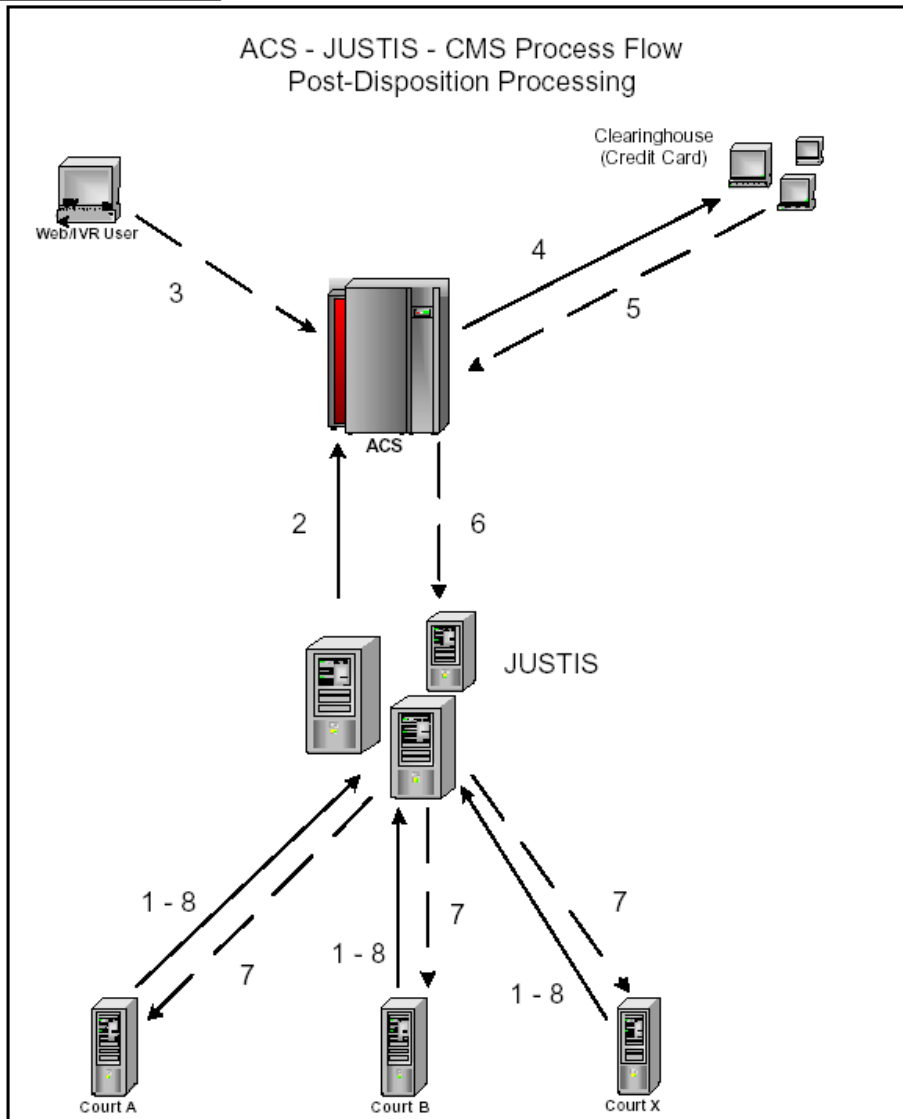
Pre-Disposition Processing



- 1) CMS sends new/updated case, party, charge, and financial information to JUSTIS.
- 2) JUSTIS processes the information and routes the information to ACS
Financials are kept at the 'Charge' Level.
ACS processes the information in eTIMS and the information is made available on the Web/IVR.
ACS sends 'Reminder Notice' to the customer.
- 3) Customer makes payment on the ACS Web or IVR.
- 4) ACS sends Payment (Credit Card information) to Clearinghouse for funds availability.
- 5) Clearinghouse confirms funds and sends payment information back to ACS.
- 6) ACS sends case and payment information to JUSTIS.
- 7) JUSTIS processes the information and routes the information to the appropriate court(s).
- 8) The Courts (AZTEC and Non-ACAP) process the information and send updates back to JUSTIS.

- The process lifecycle then restarts at process '1'.

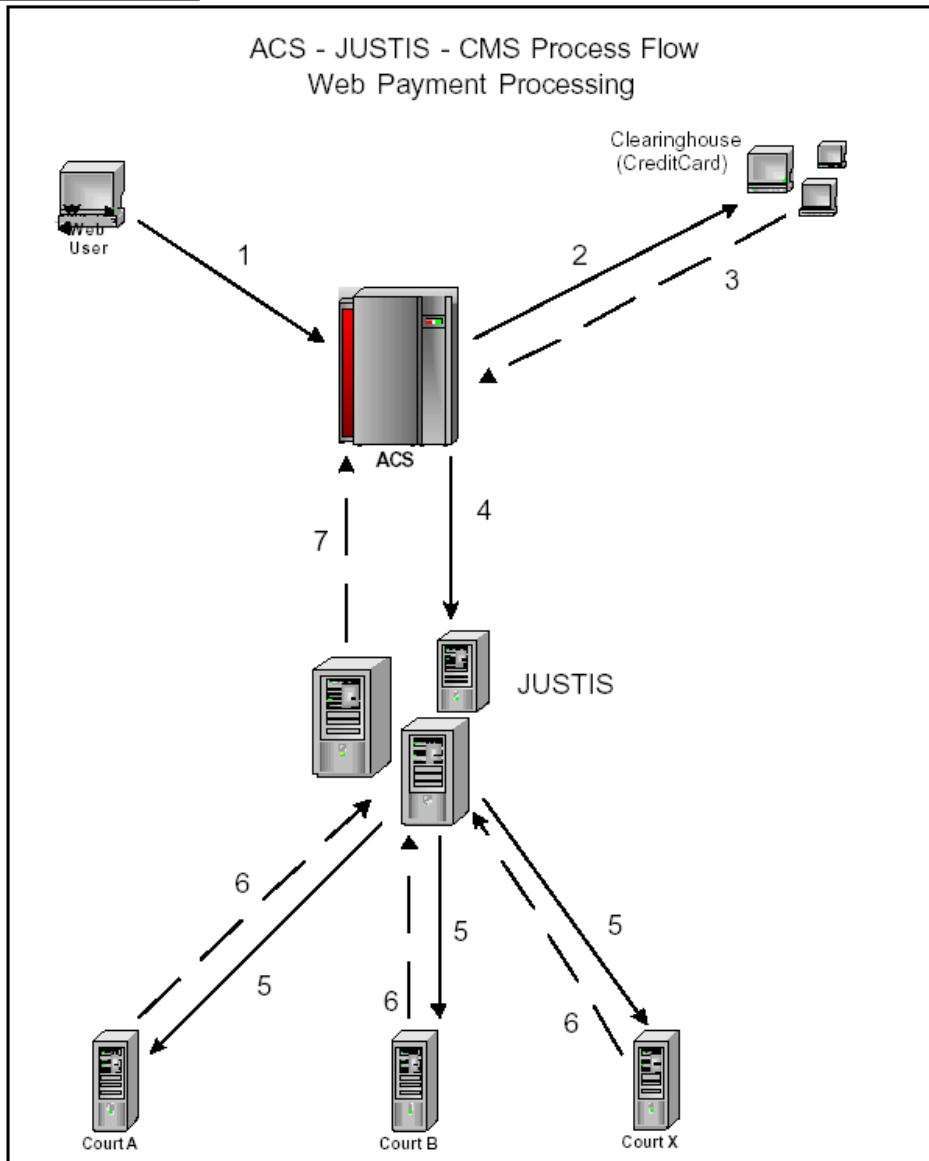
Post-Disposition Processing



- 1) CMS sends updated case, party, charge, and financial information to JUSTIS.
- 2) JUSTIS processes the information and routes the information to ACS.
Financials are now rolled up to the 'Case' Level.
ACS processes the information in eTIMS and the information is updated on the Web/IVR.
ACS sends notices if applicable.
ACS moves customer into 'Special Collections' (TIP / TTEAP) if applicable.
- 3) Customer makes payment on the ACS Web or IVR.
- 4) ACS sends Payment (Credit Card information) to Clearinghouse for funds availability.
- 5) Clearinghouse confirms funds and sends payment information back to ACS.
- 6) ACS sends case and payment information to JUSTIS.
- 7) JUSTIS processes the information and routes the information to the appropriate court(s).
- 8) The Courts (AZTEC and Non-ACAP) process the information and send updates back to JUSTIS.

- The process lifecycle then restarts at process '1'.

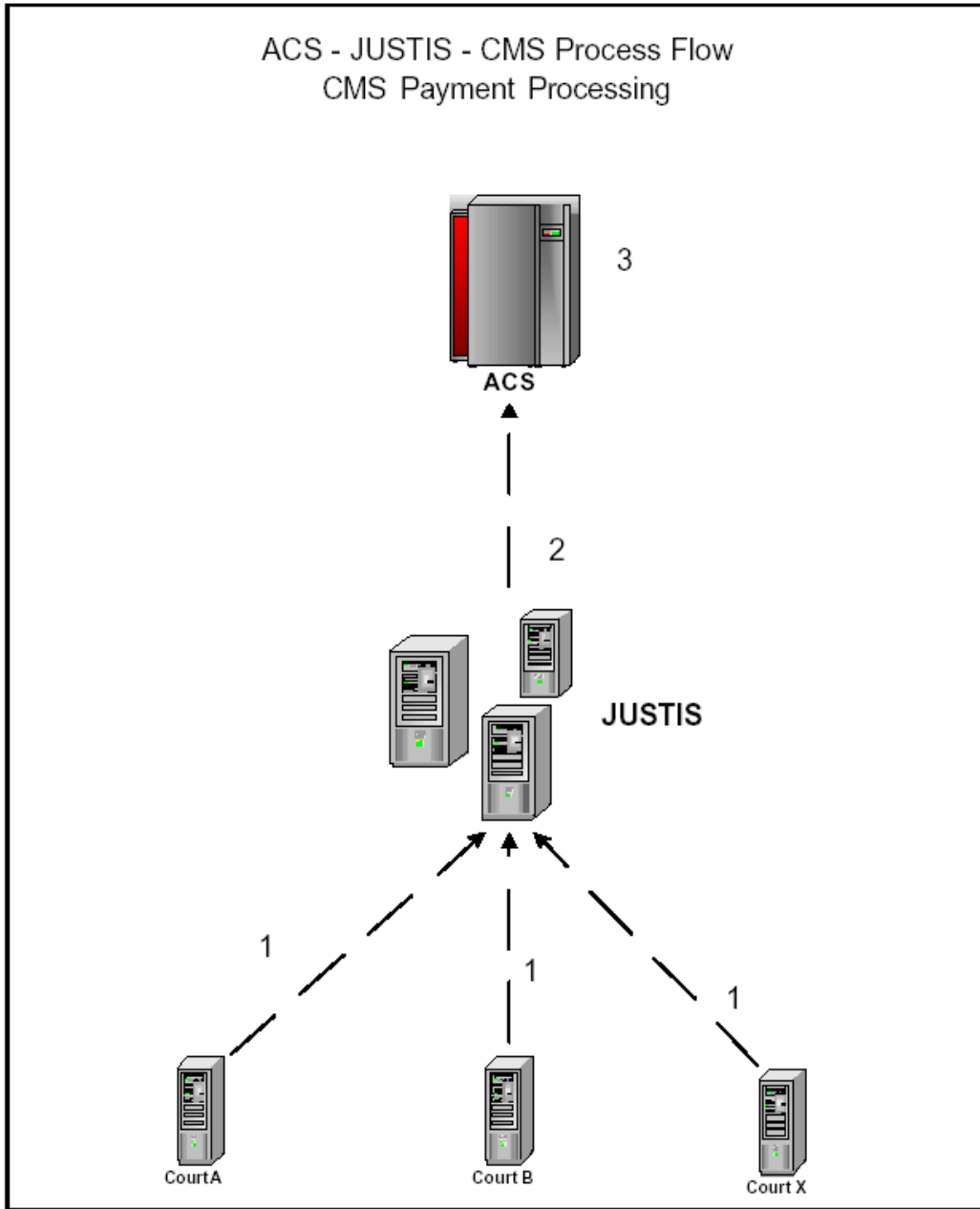
Web Payment Processing



- 1) Customer makes payment on the ACS Web or IVR either at 'Charge Level' (Pre-Disposition) or at 'Case Level' (Post-Disposition).
- 2) ACS sends Payment (Credit Card information) to Clearinghouse for funds availability.
- 3) Clearinghouse confirms funds and sends payment information back to ACS.
- 4) ACS sends case and payment information to JUSTIS.
- 5) JUSTIS processes the information and routes the information to the appropriate court(s).
- 6) The Courts (AZTEC and Non-ACAP) process the information and send updates back to JUSTIS.
- 7) JUSTIS processes the information and routes the confirmed information to ACS.
ACS processes the information in eTIMS and the information is updated on the Web/IVR.

- The process lifecycle then restarts at process '1'.

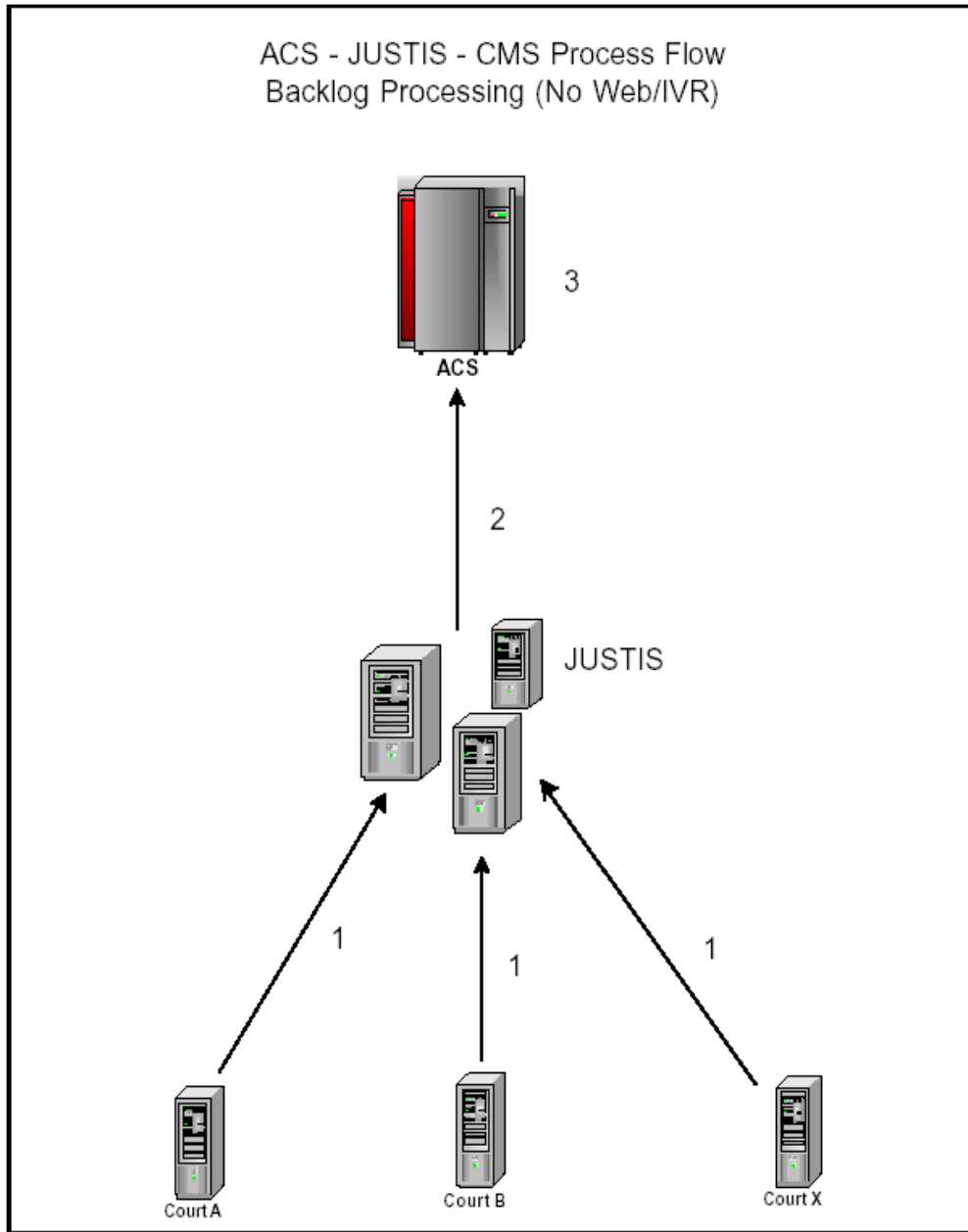
CMS Payment Processing



- 1) Customer makes payment at the Court.
- 2) The Court (AZTEC / Non-ACAP) processes the payment and sends updates to JUSTIS.
- 3) JUSTIS processes the information and routes the information to ACS.
ACS processes the information in eTIMS and the information is updated on the Web/IVR.

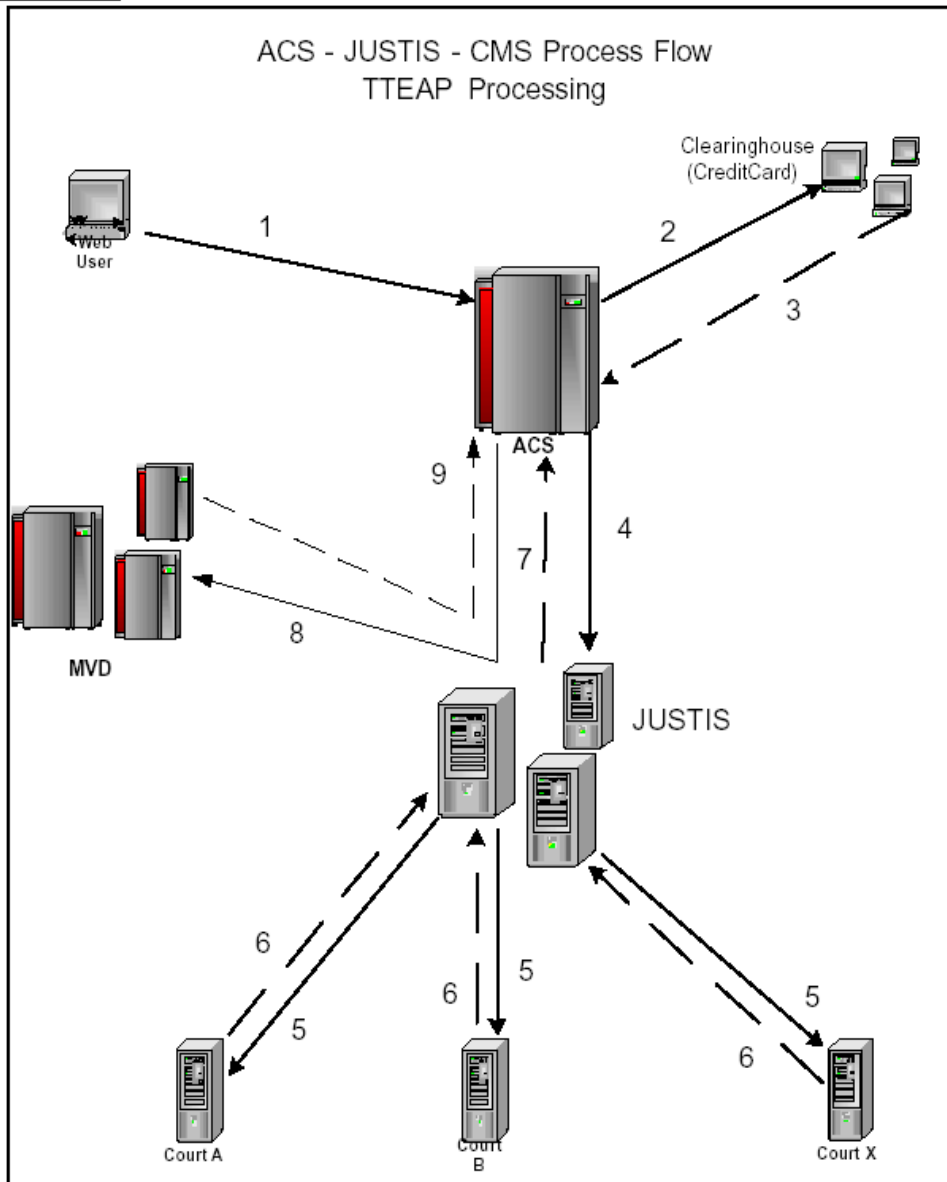
- The process lifecycle then restarts at process '1'.

Backlog Processing (No Web/IVR)



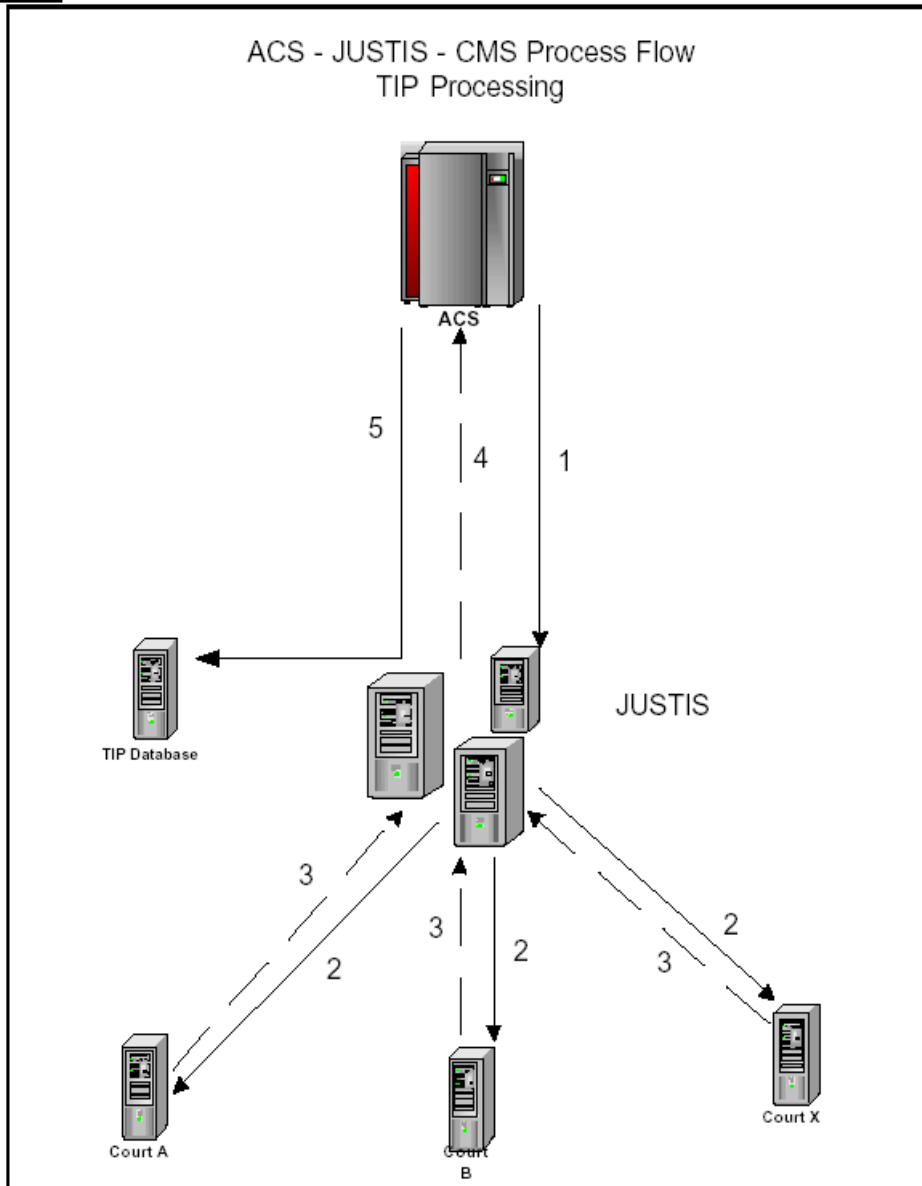
- 1) CMS sends backlog case, party, charge, and financial information to JUSTIS.
- 2) JUSTIS processes the information and routes the information to ACS.
Financials are rolled up to the 'Case' Level.
- 3) ACS processes the information in eTIMS.
ACS sends notice(s).

TTEAP Processing



- 1) Customer makes payment on the ACS Web or IVR either at 'Case Level' (Post-Disposition).
- 2) ACS sends Payment (Credit Card information) to Clearinghouse for funds availability.
- 3) Clearinghouse confirms funds and sends payment information back to ACS.
- 4) ACS sends case and payment information to JUSTIS.
- 5) JUSTIS processes the information and routes the information to the appropriate court(s).
- 6) The Courts (AZTEC and Non-ACAP) process the information and send updates back to JUSTIS.
- 7) JUSTIS processes the information and routes the confirmed information to ACS.
- 8) ACS processes the information in eTIMS and if all obligations are satisfied, sends remove TTEAP transaction to MVD (through JUSTIS).
- 9) MVD processes the information, removes the TTEAP indicator, and sends confirmation back to ACS (through JUSTIS)

TIP Processing



- 1) ACS sends court, case, party, and TIP indicator to JUSTIS.
- 2) JUSTIS processes the information and routes the information to the appropriate court(s).
- 3) The Courts (AZTEC and Non-ACAP) process the information (add TIP event and TIP fee to applicable cases) and send updates back to JUSTIS.
- 4) JUSTIS processes the information and routes the updated information to ACS.
- 5) ACS processes the information in eTIMS and submits claim information to the TIP database (through JUSTIS).

6 FARE MQ Message Format

The message format for all MQ messages (transactions) should be:

```

xxxxxxxxxxxxxxxxxyyyyyyyyyyyyyyyyyyy
|-----|-----|
Message Header           Data
  
```

The Message Header will contain the following fields:

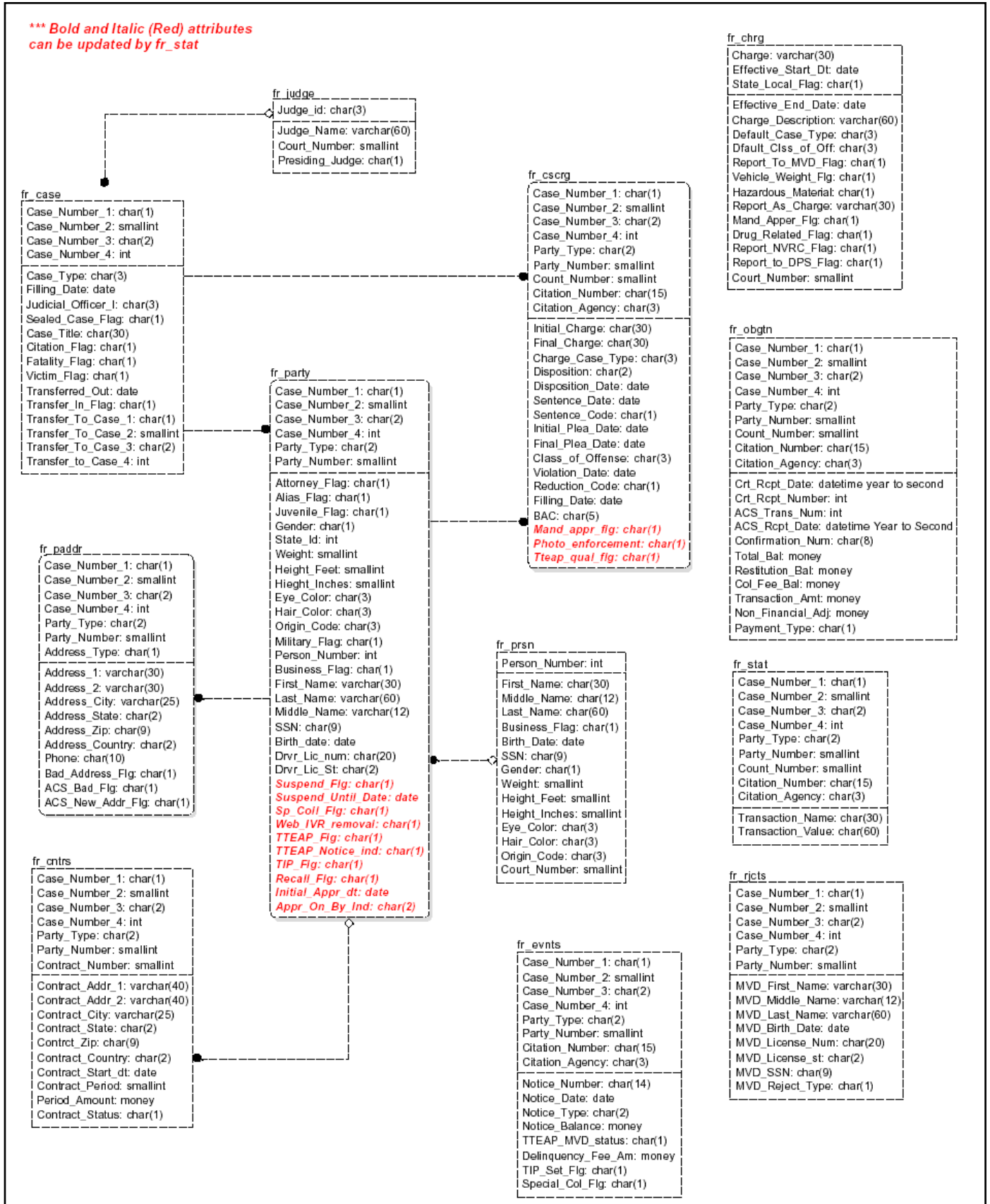
Field Name	Data Type	Description
Transaction Identifier	Char(8)	Table Names in model
Transaction Action	Char(1)	U = Update or Add D = Delete
Error Code	Smallint	Codes will be maintained by JUSTIS Field will be set to '0' on initial Transaction See " Transaction Error Codes " section
Source System Transaction Number	Int (10)	Transaction number that Source System creates
Court Number	Char(4)	Source System Court Number Will create numbers for JUSTIS and FARE VENDOR Needs to be formatted for all four characters – ex. "0745" instead of "745"
Date/Time Stamp	Date/Time	Format: yyyy-mm-dd hh:mm:ss

Example record for table **fr_stat**:

```

fr_stat|U|0|1|9999|2003-08-25 15:25:23|M|0748|TR|12345678|D|1|Test Flag|Y|
|-----Message Header-----|----- Data -----|
  
```

7 FARE Transaction Model –Detailed (Stage Tables)



8 Table Data Elements and Attributes

Legend

The following values may be contained in the Req/Opt column:

- R - **Required.** These are table keys for data integrity.
The attribute value must be captured by the source system.
(NOT NULL)
- R* - **Required once data is known.**
These are key fields that need to be entered, once the data is known.
The attribute value must be captured by the source system.
- D - **Desired.** These are values are used for analysis.
The source system must allow for the capture of this data item.
- O - **Optional.** These values are not required.
The extract file will be able to accommodate these values.

The following values may be contained in the **KEY** column:

- P - **Primary Key.**
Table primary keys that are used for data integrity.
The attribute value must be captured by the source system.
(NOT NULL)
- P* - **Primary Key (If data is available)**
Table primary keys that are used for data integrity.
The attribute value should be entered, if data is available.
(Can be NULL)
- F - **Foreign Key.**
Secondary table keys that are used for “look up” Tables.
- <Blank> - **Not a Key.**
These values are not a key.
These values are primarily data items.

Lookup Tables:

Fr_judge							
Attributes	Req-- - Opt	KEY	Data Type	Len/ Max Len	Domain (Values)	Format	Description
Judge ID (judge_id)	D	P	char	3			Identifies a specific judge
Judge Name (judge_nm)	D		varchar	60			Judicial Officer name
Court Number (crt_num)	D	F	smallint	5		700	Court number
Presiding Judge Flag (presiding_judge)	D		Char	1	Y/N		Is this the Presiding Judge

*** This is an 'Optional' Table**

Fr_chrg							
Attributes	Req -- Opt	KEY	Data Type	Len Max Len	Domain (Values)	Format	Description
Charge (chrg)	R	P	Varchar	30	Charge Lookup Table	28-701A	Complete statutory reference for an offense (ex: 28-701A)
Effective Start Date (eff_start_dt)	R	P	Date	10		Mm/dd/yyyy	Effective start date of charge
State Local Flag (st_local_flg)	R	P	Char	1	Y / N	Y N	Indicates is charge is state (Y) or local (N)
Effective End Date (eff_end_dt)	R		Date	10		Mm/dd/yyyy	Effective end date of charge
Charge Description (chrg_descr)	R		Varchar	60			Long Description of Charge
Default Case Type Id (dflt_cs_type)	D		Char	3	Case Type Lookup Table		Identifies sub-categories or types within a case type
Default Class of Offense (dflt_cl_ofns)	D		Char	3	Class of Offense Lookup Table	F1 M5	Identifies the case severity of a charge with 1 as the most severe for Felony and Misdemeanor.
Report to MVD Flag (rpt_mvd_flg)	D		Char	1	Y / N	Y N	Indicates if the final disposition of a charge should be reported to MVD
Vehicle Weight Flag (vhcl_wght_flg)	D		Char	1	Y / N		Charge related to vehicle weight violation
Hazardous Materials Flag (hazmat_flg)	D		Char	1	Y / N	Y N	Indicates if citation involves hazardous materials
Report As Charge (rpt_as_chrg)	D		Varchar	30			MVD charge code associated with the court charge code
Mandatory Appearance Flag (mand_appr_flg)	D		Char	1	Y / N	Y N	Indicates mandatory appearance for violation
Drug Related Flag (drug_rel_flg)	D		Char	1	Y / N	Y N	Indicates if charge is drug related
Report NVRC Flag (rpt_nvrc_flg)	D		Char	1	Y / N	Y / N	Indicates if the charge is NVRC Reportable
Report to DPS Flag (rpt_dps_flg)	D		Char	1	Y / N	Y / N	Indicates if the charge is DPS reportable
Court Number (crt_num)	R	P	Smallint	5		741	Court number

Base Tables:

Fr_Cscrg Attributes	Req - Opt	KEY	Data Type	Len Max Len	Domain (Values)	Format	Description
Case Number 1 (cs_num_1)	R	P	Char	1	Court Type Lookup Table		Type of Court
Case Number 2 (cs_num_2)	R	P	smallint	4		741	DPS/State Court Number
Case Number 3 (cs_num_3)	R	P	Char	2	Case Category Lookup Table		State Defined Case Category
Case Number 4 (cs_num_4)	R	P	Int	10		200100349	Case Id Number ** NOTE: maximum value is 2147483647
Party Type (prty_type)	R	P	Char	2	Party Type Lookup Table	D	Party Type for the case
Party Number (prty_num)	R	P	smallint	5		1	Sequential number used to identify parties
Count Number (cnt_num)	R	P	smallint	5		1	Distinct occurrence for each charge
Citation Number (citn_num)	R*	P*	Char	15		Cannot be NULL – must contain one space if no value	Unique number for a Citation
Citation Agency (citn_agcy)	R*	P*	Char	3		Cannot be NULL – must contain one space if no value	Identifies the court unique agency code for the issuing agency
Initial Charge (ini_chrg)	R	F	Char	30	Charge Lookup Table		Initial charge for the count
Final Charge (fnl_chrg)	D	F	Char	30			Final charge for the count
Charge Case Type (chrg_cs_type)	R	F	Char	3	Charge Case Type Lookup Table		Statewide standard code for defined charge type
Disposition Code (dsptn_cd)	R*	F	Char	2	Disposition Lookup Table		Disposition of the Charge
Disposition Date (dsptn_dt)	R*		Date	10		mm/dd/yyyy	Disposition Date for charge
Sentence Date (sntc_dt)	R*		Date	10		mm/dd/yyyy	Date defendant was sentenced for the charge
Sentence Code (sntc_cd)	D	F	Char	1	Sentence Lookup Table		Identifies a type or category of sentences
Initial Plea Date (ini_plea_dt)	D		Date	10		mm/dd/yyyy	Date of initial plea for the charge
Final Plea Date (fnl_plea_dt)	D		Date	10		mm/dd/yyyy	Date of final plea for the charge
Class of Offense (cl_ofns)	R	F	Char	3	Class of Offense Lookup Table		Severity of the charge
Violation Date (violtn_dt)	R		Date	10		mm/dd/yyyy	Date defendant allegedly committed the violation
Reduction Code (rdctn_cd)	D		Char	1		Y/N	Identifies a reduction in a severity

Fr_Cscrg (continued)							
Attributes	Req - - Opt	KEY	Data Type	Len Max Len	Domain (Values)	Format	Description
Filing Date (filing_dt)	D		Date	10		Mm/dd/yyyy	Date the charge was filed
Blood Alcohol Level (BAC)	D		Char	5			Blood Alcohol Level
Mandatory Appearance Flag (mand_appr_flg)	D		Char	1	Y / N		Indicates mandatory appearance for violation
Photo Enforcement Flag (photo_enf)	D		Char	1	Y / N		Indicates if the charge involves photo radar
TTEAP Qualifier Flag (tteap_qual_flg)	R		Char	1	Y / N		Indicates if the charge qualifies for TTEAP

Fr_Case							
Attributes	Req -- Opt	KEY	Data Type	Len/ Max Len	Domain (Values)	Format	Description
Case Number 1 (cs_num_1)	R	P	Char	1	Court Type Look up Table		Type of Court
Case Number 2 (cs_num_2)	R	P	Smallint	5		700	DPS / State Court Number
Case Number 3 (cs_num_3)	R	P	Char	2	Case Category Look up Table		State Defined Case Category
Case Number 4 (cs_num_4)	R	P	Int			200100349	Case Id Number NOTE: maximum value is 2147483647
Case Type (cs_type)	D		Char	3	Charge Case Type Look up Table		Identifies sub-categories or types within a case category at the most serious charge.
Filing Date (filing_dt)	R		Date	10		Mm/dd/yyyy	Case Filing Date
Judicial Officer Id (judge_id)	D	F	Char	3			Identifies a specific judge
Sealed Case Flag (sealed_flg)	R		Char	1	Y / N		Indicates if a case is sealed/expunged
Case Title (cs_title)	D		Char	30			Brief description of the case name or title
Citation Flag (citn_flg)	D		Char	1	Y / N		Indicates if the case is initiated by a citation
Fatality/Serious Injury Flag (fatality_flg)	D		Char	1	Y / N		Indicates if a case is involved in a fatality
Victim Flag (victim_flg)	D		Char	1	Y / N		Indicates if a case involves a victim
Transferred Out Date (xfer_out_dt)	D		Date	10		Mm/dd/yyyy	Date case is transferred to another court
Transfer in Flag (xfer_in_flg)	D		Char	1	Y / N		Indicates if a case is transferred from another court
Transfer To Case Number 1 (xfer_to_cs_num_1)	D		Char	1	Court Type Lookup Table		Court type case is transferred to
Transfer To Case Number 2 (xfer_to_cs_num_2)	D		smallint			700	Court number case is transferred to
Transfer To Case Number 3 (xfer_to_cs_num_3)	D		Char	2	Case Category Lookup Table		Case category case is transferred to
Transfer To Case number 4 (xfer_to_cs_num_4)	D		Int	10			Case Id number case is transferred to

Fr_party							
Attributes	Req -- Opt	KEY	Data Type	Len/ Max Len	Domain (Values)	Format	Description
Case Number 1 (cs_num_1)	R	P	Char	1	Court Type Lookup Table		Type of Court
Case Number 2 (cs_num_2)	R	P	smallint	5		700 300	DPS /State Court Number
Case Number 3 (cs_num_3)	R	P	Char	2	Case Category Lookup Table		State Defined Case Category
Case Number 4 (cs_num_4)	R	P	Int	10		200100349	Case Id Number NOTE: maximum value is 2147483647
Party Type (prty_type)	R	P	Char	2			Describes each type of party associated with a case
Party Number (prty_num)	R	P	smallint	5			Sequential number used to identify parties
Attorney Flag (atry_flg)	D		Char	1	Y / N		Indicates if a party in case has an attorney
Alias Flag (alias_flg)	D		Char	1	Y / N		Indicates if the party has a known alias
Juvenile Flag (juv_flg)	D		Char	1	Y / N		Indicates if the party in a case is classified as a juvenile
Gender (sex)	D		Char	1	M = Male F = Female U = Unknown	M F U	Indicates the gender of the party in the case
State Id (st_id)	D		Int	10			Number assigned to identify a person statewide
Weight (weight)	D		smallint	5		125	Party weight in pounds
Height Feet (height_feet)	D		smallint	5		5	"Feet" portion of party's height
Height Inches (height_inches)	D		smallint	5		12	"Inches" portion of party's height
Eye Color (eye_color)	D		Char	3			Person Eye Color
Hair Color (hair_color)	D		Char	3			Person Hair Color
Origin Code (origin_cd)	D		Char	3			Indicates the ethnicity of the party
Military Flag (law_enf_flg)	D		Char	1	Y / N		Party is a member of the military services
Source System Person Number (prsn_num)	R	F	Int	10			Unique number that identifies a person across all parties
Business Flag (business_flg)	D		Char	1	Y / N		Party is a business
First Name (first_nm)	D		varchar	30			Party First Name
Last Name (last_nm)	R		varchar	60		Jones Smith Sr Young III	Party Last Name; Business name if Business Flag = Y If the name has a suffix, the suffix will be concatenated with the last name. See FARE Assumptions (bullet #2) on page 35.
Middle Name (middle_nm)	D		varchar	12			Party Middle Name

Fr_party (continued)							
Attributes	Req -- Opt	KEY	Data Type	Len/ Max Len	Domain (Values)	Format	Description
SSN (ssn)	D		Char	9			Identifies the party's social security number
Birth Date (birth_dt)	D		Date	10		MM/DD/YYYY	Identifies the date the party in the case was born
Driver License Number (drv_lic_num)	D		Char	20			Identifies the party's driver license number
Driver License State (drv_lic_st)	D		Char	2			State where driver license is issued
Suspend Flag (suspend_flg)	D		Char	1	Y / N		Suspend All activity until 'Suspend Until Date' is reached or until 'Suspend Flag' is 'N' except for WEB/IVR
Suspend Until Date (suspend_until_dt)	D		Date	10		Mm/dd/yyyy	Suspend All activity until this date.
Special Collection Flag (sp_coll_flg)	D		Char	1	Y / N / Q		Case-Party at VENDOR for Special Collection. "Q" denotes enhanced FARE referral with no collections fee assessed.
WEB / IVR Removal (web_ivr_removal)	D		Char	1	Y / N		Case-Party is Not Accessible from Web/IVR.
TTEAP Flag (tteap_flg)	D		Char	1	Y / N / W		Case-Party is in / not in TTEAP. W = Case-Party is 'Waived'
TTEAP Notice Indicator (tteap_notice_ind)	D		Char	1		0, 1, 2	Number of Collection attempts made by courts (0, 1 and 2 are only valid values). This Indicator is set with the back log for TTEAP
TIP Flag (tip_flg)	D		Char	1	Y / N / R		Case-Party is in / not in TIP. "R" denotes a case in TIP that has restitution on the case.
Recall Flag (recall_flg)	D		Char	1	Y / N		Case-party is permanently removed from all collection processing. Acts like a 'Cease 2'
Initial Appearance Date (ini_appear_dt)	D		Date	10		Mm/dd/yyyy	Initial Appearance Date
Appear On or By Indicator (appr_on_by_ind)	R		Char	2	ON BY		Indicator for notice wording
Contract Indicator (cntrct_ind)	D		Char	1	Y / N / C		Indicates if payment contract exists on a case – null or blank treated as "N". "C" denotes a FARE CAP contract has been established.
OPA Eligibility Flag (opa_flg)	D		Char	1	Y,W,N,P		Indicates if case/party is eligible for online payment agreements. "Y"=Eligible for OPA(default), "N"=Not eligible, "W"=Not eligible due to warrant, "P"=Not eligible for FARE CAP OPA

→ **Default:** The default for all the status flags are 'N'.

Fr_Prsn							
Physical Field Name	Req -- Opt	KEY	Data Type	Len/ Max Len	Domain (Values)	Format	Description
Source System Person Number (prsn_num)	R	P	Int	10			Unique number automatically assigned to identify a person
First Name (first_nm)	D		varchar	30			Person's First Name
Middle Name (middle_nm)	D		varchar	12			Person's Middle Name
Last Name (last_nm)	R		varchar	60		Jones Smith Sr Young III	Party Last Name Business name if Business Flag = Y If the name has a suffix, the suffix will be concatenated with the last name. See FARE Assumptions (bullet #2) on page 35.
Business Flag (business_flg)	D		Char	1	Y / N		Business Flag
Birth Date (birth_dt)	D		date	10		Mm/dd/yyyy	Identifies the date the party in the case was born
SSN (ssn)	D		char	9			Identifies the party's social security number
Gender (sex)	D		Char	1	M = Male F = Female U = Unknown	M F U	Indicates the gender of the party in the case
Weight (weight)	D		smallint	5		125	Party weight in pounds
Height Feet (height_feet)	D		smallint	5		5	"Feet" portion of party's height
Height Inches (height_inches)	D		smallint	5		10	"Inches" portion of party's height
Eye Color (eye_color)	D		Char	3			Person Eye Color
Hair Color (hair_color)	D		Char	3			Person Hair Color
Origin Code (origin_cd)	D		Char	3			Indicates the ethnicity of the party
Court Number (crt_num)	R		smallint	5		700	Court number

Fr_Paddr							
Attributes	Req -- Opt	KEY	Data Type	Len/ Max Len	Domain (Values)	Format	Description
Case Number 1 (cs_num_1)	R	P	Char	1	Court Type Lookup Table		Type of Court
Case Number 2 (cs_num_2)	R	P	Smallint	1		700	DPS / State Court Number
Case Number 3 (cs_num_3)	R	P	Char	2	Case Category Lookup Table	TR	State Defined Case Category
Case Number 4 (cs_num_4)	R	P	Int	10		200100349	Case Id Number NOTE: maximum value is 2147483647
Party Type (prty_type)	R	P	Char	2	Party Type Lookup Table	P	Describes each type of party associated with a case
Party Number (prty_num)	R	P	Smallint	5		1	Sequential number used to identify parties of the same type on a case
Address Type (addr_type)	R	P	Char	1	P = Primary S = Secondary	P	The type of address; Primary or Secondary
Address 1 (addr_1)	D		Varchar	30			First line of a party's address
Address 2 (addr_2)	D		Varchar	30			Second line of a party's address
Address City (city)	D		Varchar	25			City
Address State (state)	D		Char	2			State
Address Zip (zip)	D		Char	9			Zip code
Address Country (country)	D		Char	2	Country Code Lookup Table	US –Default MX	Country of address
Phone (phone)	D		Char	10			Phone number of the party
Bad Address Indicator (bad_addr_ind)	D		Char	1	B = Bad Address		Indicates if the address is bad set by the court
ACS Bad Address Flag (ACS_bad_flg)	D		Char	1	B= Bad Address		FARE VENDOR has determined that the address is bad.
ACS New Address Flag (ACS_new_flg)	D		Char	1	Y / N		FARE VENDOR has provided the new address by skip tracing

Fr_obgtn							
Attributes	Req -- Opt	KEY	Data Type	Len/ Max Len	Domain (Values)	Format	Description
Case Number 1 (cs_num_1)	R	P	Char	1	Court Type Lookup Table		Type of Court
Case Number 2 (cs_num_2)	R	P	Smallint	5		700	DPS / State Court Number
Case Number 3 (cs_num_3)	R	P	Char	2	Case Category Lookup Table	TR	State Defined Case Category
Case Number 4 (cs_num_4)	R	P	Int	10		200100349	Case Id Number NOTE: maximum value is 2147483647
Party Type (prty_type)	R	P	Char	2	Party Type Lookup Table	P	Describes each type of party associated with a case
Party Number (prty_num)	R	P	smallint	5		1	Sequential number used to identify parties of the same type on a case
Count Number (cnt_num)	R	P	smallint	5		1	Distinct occurrence for each charge
Citation Number (citn_num)	R*		Char	15			Unique number for a Citation
Citation Agency (citn_agcy)	R*		Char	3			Identifies the court unique agency code for the issuing agency
Court Receipt Date (crt_rcpt_dt)	R		Datetime			Yyyy-mm-dd hh:mm:ss	Receipt date time issued by court. Time is required to calculate cut off day.
Court Receipt Number (crt_rcpt_num)	R		Char	10			Unique number identifying a Receipt
Vendor Transaction Number (acs_trans_num)	R		Int	10			FARE VENDOR Transaction number, NULL for court initiated Payments
Vendor Receipt Date (acs_rcpt_dt)	R		Datetime			Yyyy-mm-dd hh:mm:ss	FARE VENDOR Receipt date time for web/IVR payment. Time is required to calculate end of day
Confirmation Number (confirm_num)	R*		Char	8			FARE VENDOR provided confirmation number to defendant-WEB/IVR payments only
Total Balance (total_bal)	R		Money	10,2			Total Assessment amount owed, Includes Col_Fee_Bal and Restitution_Bal. Can not be Negative
Delinquency Fee Balance (restu_bal)	R		Money	10,2			Current Delinquency Fee balance owed, Can not be negative.
Collection Fee Balance (col_fee_bal)	R		Money	10,2			Collection Fees Balance owed after transaction amount applied. Can not be negative
Financial Transaction Amount (trans_amt)	R		Money	10,2			Financial amounts related to payments. Would appear as a negative for a receipted payment and would appear positive for payment reversals i.e. voids or dishonorments.
Non Financial Adjustments (non_fncl_adj)	R		Money	10,2			Non Financial Adjustments for the transaction. Would appear as a negative for actions that decrease the balance (i.e. waiving a portion of a fee owed) and would appear as a positive for actions that increase a balance (i.e. the assessment of a new fee).
Payment Type (pmt_type)	R*		Char	1	W = Web I = IVR C = Court D = Debt Setoff P = initial partial CAP entry payment		The type of payment from FARE VENDOR. The "P" denotes the initial partial payment from FARE CAP Enrollment.

Fr_stat							
Attributes	Req - Opt	KEY	Data Type	Len/ Max Len	Domain (Values)	Format	Description
Case Number 1 (cs_num_1)	R	P	Char	1	Court Type Lookup Table		Type of Court
Case Number 2 (cs_num_2)	R	P	smallint	5		700	DPS / State Court Number
Case Number 3 (cs_num_3)	R	P	Char	2	Case Category Lookup Table	TR	State Defined Case Category
Case Number 4 (cs_num_4)	R	P	Int			200100349	Case Id Number NOTE: maximum value is 2147483647
Party Type (prty_type)	R	P	Char	2	Party Type Lookup Table	P	Describes each type of party associated with a case
Party Number (prty_num)	R	P	smallint	5		1	Sequential number used to identify parties of the same type on a case
Count Number (cnt_num)	R*	P	smallint	5		1	Distinct occurrence for each charge
Citation Number (citn_num)	R*		Char	15			Unique number for a Citation
Citation Agency (citn_agcy)	R*		Char	3			Identifies the court unique agency code for the issuing agency
Transaction Name (trans_nm)	R		Varchar	30			Name of the table.column to update the flag
Transaction Value (trans_val)	R		Varchar	60			Value to set flag.

Fr_evnts							
Attributes	Req -- Opt	KEY	Data Type	Len/ Max Len	Domain (Values)	Format	Description
Case Number 1 (cs_num_1)	R	P	Char	1	Court Type Lookup Table		Type of Court
Case Number 2 (cs_num_2)	R	P	Smallint	1		700	DPS / State Court Number
Case Number 3 (cs_num_3)	R	P	Char	2	Case Category Lookup Table	TR	State Defined Case Category
Case Number 4 (cs_num_4)	R	P	Int	10		200100349	Case Id Number NOTE: maximum value is 2147483647
Party Type (prty_type)	R	P	Char	2	Party Type Lookup Table	P	Describes each type of party associated with a case
Party Number (prty_num)	R	P	Smallint	5		1	Sequential number used to identify parties of the same type on a case
Citation Number (citn_num)	R*		Char	15			Unique number for a Citation
Citation Agency (citn_agcy)	R*		Char	3			Identifies the court unique agency code for the issuing agency
Notice Number (ntc_num)	R		Char	14			Notice number provided by FARE VENDOR
Notice date (ntc_dt)	R		Date			Mm/dd/yyyy	Notice date provided by FARE VENDOR
Notice Type (ntc_type)	R		Char	2			Notice type provided by FARE VENDOR, Identifies specific notice sent by FARE VENDOR
Notice Balance (ntc_bal)	R		Money	10,2			Amount on the Notice sent out by FARE VENDOR
TTEAP MVD Status (tteap_mvd_stat)	D		Char	1			TTEAP Flag was set / cleared by MVD
Delinquency Fee Amount (dlnqcy_fee_amt)	D		Money	10,2			Amount for added Delinquency fee, needs to be assessed by the court.
TIP Set Flag (tip_set_flg)	D		Char	1			Case is sent / cleared to TIP * NOT USED *
Special Collection Flag (sp_col_flg)	D		Char	1	E = Enhanced FARE Collection fee assessment		Case is sent for special collections. An "E" in this field denotes the trigger for the court to assess the Enhanced FARE Special Collections fee of 19.5%

Fr_rjcts							
Attributes	Req -- Opt	KEY	Data Type	Len/ Max Len	Domain (Values)	Format	Description
Case Number 1 (cs_num_1)	R	P	char	1	Court Type Lookup Table		Type of Court
Case Number 2 (cs_num_2)	R	P	smallint	1		700	DPS / State Court Number
Case Number 3 (cs_num_3)	R	P	char	2	Case Category Lookup Table	TR	State Defined Case Category
Case Number 4 (cs_num_4)	R	P	Int			200100349	Case Id Number NOTE: maximum value is 2147483647
Party Type (prty_type)	R	P	char	2	Party Type Lookup Table	P	Describes each type of party associated with a case
Party Number (prty_num)	R	P	smallint	5		1	Sequential number used to identify parties of the same type on a case
MVD First Name (first_nm)	D		varchar	30			Person's First Name received from MVD
MVD Middle Name (middle_nm)	D		varchar	12			Person's Middle Name received from MVD
MVD Last Name (last_nm)	R		varchar	60			Person's Last Name received from MVD
MVD Birth Date (birth_dt)	D		date	10		Mm/dd/yyyy	Party's birth date received from MVD
MVD Driver License Number (drvr_lic_num)	D		char	20			Party's driver license number received from MVD
MVD Driver License State (drvr_lic_st)	D		char	2			State where driver license is issued received from MVD
MVD SSN (ssn)	D		char	9			Party's social security number received from MVD. * NO LONGER RETURNED PER STATUTE *
MVD Reject Type (rjct_type)	D		char	1	A = DUPLICATE, HOLD ALREADY IN PLACE N = RECORD NOT FOUND R = R.I.P. DECEASED INDICATOR ON THIS RECORD		The Reject code returned from MVD. For a code of "R", the MVD fields above will contain the values for the party at MVD.

Fr_roa							
Attributes	Req -- Opt	KEY	Data Type	Len/ Max Len	Domain (Values)	Format	Description
Case Number 1 (cs_num_1)	R	P	Char	1	Court Type Lookup Table		Type of Court
Case Number 2 (cs_num_2)	R	P	Smallint	5		700	DPS / State Court Number
Case Number 3 (cs_num_3)	R	P	Char	2	Case Category Lookup Table	TR	State Defined Case Category
Case Number 4 (cs_num_4)	R	P	Int	10		200100349	Case Id Number
Event Date (event_dt)	R		Date			mm/dd/yyyy	Date of the event
Event ID (event_id)	R		Int	10			Sequential event code ID number
Event Code (event_cd)	R		Smallint	5			Four or five digit code number for the event
Event Description (event_descr)	R		Char	60			Event Description to appear on Public Access
Judicial Officer ID (jud_ofcr)	D	F	Char	3			Identifies a specific judge
Party Type (prty_type)	D		Char	2	Party Type Lookup Table	P	Describes the party type - If Event is related to a specific case party then this is a required field
Party Number (prty_num)	D		smallint	5		1	Sequential number used to identify parties of the same type on a case - If Event is related to a specific case party then this is a required field
Adjustment Amount (adj_amt)	D		Char	15		-\$99,999	Amount of monetary adjustment/value if event documents monetary activity – is a character string, send in format for view in public access, is tied to receivable type.
Receivable Type (rcvbl_type)	D		Char	2		K1, K2	Two character receivable type code that the adjustment amount is tied to. Follows standardized receivable types.
Action Date (actn_dt)	D		Date			Mm/dd/yyyy	The date an action is to take place, such as a calendar event
Action Flag (actn_flg)	D		Char	1			Action code (Add, Update, Delete) for the event documented (primarily used by AZTEC courts)
Check Number (check_nbr)	D		Char	10			Check number if documenting a payment receipt

Fr_cntrs							
Attributes	Req -- Opt	KEY	Data Type	Len/ Max Len	Domain (Values)	Format	Description
Case Number 1 (cs_num_1)	R	P	Char	1	Court Type Lookup Table		Type of Court
Case Number 2 (cs_num_2)	R	P	Smallint	5		700	DPS / State Court Number
Case Number 3 (cs_num_3)	R	P	Char	2	Case Category Lookup Table	TR	State Defined Case Category
Case Number 4 (cs_num_4)	R	P	Int	10		200100349	Case Id Number
Party Type (prty_type)	R	P	Char	2	Party Type Lookup Table	P	Describes each type of party associated with a case
Party Number (prty_num)	R	P	Smallint	5		1	Sequential number used to identify parties of the same type on a case
Contract Number (cntrct_num)	R	P	Int	10			Sequential number used to identify Contracts
Contract Address 1 (cntrct_addr_1)	D		Varchar	30 40			First line of a party's address
Contract Address 2 (cntrct_addr_2)	D		Varchar	30 40			Second line of a party's address
Contract Address City (cntrct_city)	D		Varchar	25			City
Contract Address State (cntrct_state)	D		Char	2			State
Contract Address Zip (cntrct_zip)	D		Char	9			Zip code
Contract Address Country (cntrct_cntry)	D		Char	2	Country Code Lookup Table	US MX	Country of address
Contract Email Address (cntrct_email)	D		Char	50			Email address provided for SMS communication
Contract Phone Number (cntrct_phone)	D		Char	10			Party Phone Number
Contract Start Date (cntrct_st_dt)	R		Date				Date the Contract begins
Contract Period (cntrct_prd)	R		Smallint	5			Total number of months Contract Period
Period Amount (cntrct_amt)	R		Money	10,2			Amount owed for each period
OPA Type (opa_type)	R		Char	1	O = Online Contract (standard) P = Online FARE CAP Contract		The Type of Online Payment Agreement

**** Not currently used at this time**

Fr_fees							
Attributes	Req -- Opt	KEY	Data Type	Len/ Max Len	Domain (Values)	Format	Description
Case Number 1 (cs_num_1)	R	P	Char	1	Court Type Lookup Table		Type of Court
Case Number 2 (cs_num_2)	R	P	Smallint	5		700	DPS / State Court Number
Case Number 3 (cs_num_3)	R	P	Char	2	Case Category Lookup Table	TR	State Defined Case Category
Case Number 4 (cs_num_4)	R	P	Int	10		200100349	Case Id Number
Party Type (prty_type)	R	P	Char	2	Party Type Lookup Table	P	Describes each type of party associated with a case
Party Number (prty_num)	R	P	smallint	5		1	Sequential number used to identify parties of the same type on a case
Count Number (cnt_num)	R	P	smallint	5		1	Distinct occurrence for each charge
Citation Number (citn_num)	R*		Char	15			Unique number for a Citation
Citation Agency (citn_agcy)	R*		Char	3			Identifies the court unique agency code for the issuing agency
Report Date (rpt_dt)	R		Date			Mm/dd/yyyy	Date when the transaction is Reported to AOC.
Receivable Type (rcvbl_type)	R		Char	2		K1, K2, K3	Receivable type for fees collected. K1 is 19%, K2 is delinquent fees, K3 is general service fees, K4 is Installment Plan Fee
Total Balance (total_bal)	R		Money	10,2			Total Assessment amount owed for the receivable type. Can not be Negative
Amount Paid (amt_pd)	R		Money	10,2			Amount Paid for the Receivable Type. can be negative
Non Financial Adjustments (non_fncl_adj)	R		Money	10,2			Non Financial Adjustments for the Receivable Type.

Transaction Error Codes

This section will contain the Error Codes and Description for errors encountered during the load of the transaction. This will be a growing list, based upon the errors encountered during development and testing.

Error Code	Description	Comments
0	No Error	
1	Invalid Transaction Identifier	
2	Invalid Transaction Action	
3	Invalid Error Code	
4	Invalid Source System Transaction Number	
5	Invalid Court Number	
6	Invalid Date/Time Stamp	
7	Duplicate Source System Transaction Number	
8	Missing Primary Keys	
9	Missing 'Required' Field	
10	Invalid Record Length	
11	Invalid Field Length	
12	Invalid Field Type	
13	Invalid Disposition Code	Disposition Code does not match standards
14	Invalid Status	
15	Invalid Charge Code	
16	Missing Backlog Flag	
17	Missing / Invalid Primary key	
18	Negative Total Balance in fr_obgtn	

Phoenix Municipal (Additional Error Codes)

FARE Reject Error Codes

(These codes result in an inbound transaction being rejected back to JUSTIS)

- 501 Invalid Court Number (transaction received at wrong court)
- 502 Unknown or unexpected transaction type.
- 503 Unknown or Missing Case Number. Case does not exist in court's CMS.
- 504 Transaction contains too few attributes.
- 505 Transaction contains too many attributes.
- 510 Financial transaction received without transaction amount.
- 511 Unrecognized FARE Event
- 512 No identified action for Address Update (*acs_bad_flg* OR *acs_new_flg*)
- 513 New Address transaction missing critical data (*addr_1*, *city*, *state*)

FARE Phoenix internal warning codes

- 10000 CMS outbound Transaction rejected at FARE / JUSTIS

Version 3.7

10001 Charge not found. Transaction posted to specified Case.
10002 Overpayment posted.
10003 Underpayment posted.
10004 Payment Posting failed
10005 Unknown Notice Type received
10006
10007 New Delinquency Fee bypassed – previously imposed.
10008 Update received for address not at FARE
10009 Bad address update received – address unmatched in CMS
10010 Duplicate Bad Address update received
10011 Duplicate New Address update received

9 Full FARE Assumptions

1. Attributes that are at the 'CASE Level' (fr_case)

If an attribute is for a specific citation on the case, the attribute is true at the case level.

2. Name suffix concatenated with Last Name

If the Party Name / Person Name contain a suffix, the suffix should be concatenated with the Party / Person Last Name. The format of the Last Name field should be the last name, then a space and then the suffix. The suffix should not contain any punctuations.

Valid Examples: Jones Jr
 Smith Sr
 Young III

Invalid Examples: Jones Jr.
 Smith –Sr
 YoungIII

3. Once a TTEAP Hold request records are submitted to MVD in Batch, MVD should return a response status for each record received. If a response is not received within seven days, FARE VENDOR will resubmit another request.

4. When a TTEAP Waiver is sent to FARE VENDOR, the record is removed from TTEAP and a “countdown clock” is started. After 30 days, the record is placed back on TTEAP hold. The TTEAP Waiver can not be removed electronically. If the flag was sent in error, the court would need to contact AOC to have the TTEAP Waiver manually removed.

10 Issues and Concerns

1. Feedback from courts (RE: Transaction layout or Data Model)

11 Statewide Standard Tables

This section references the statewide tables that are used in data elements of the base tables. The statewide codes are current as of January 2, 2002. The statewide codes that are in the tables should be used. The Superior Courts and Limited Jurisdiction Courts are working towards standardizing the many of these codes. Once the standardization project is completed, the changes will be incorporated into this document and external files.

The non-AZTEC courts will be required to send data based on the statewide standard codes. The non-AZTEC courts will need to map any non-standard court code into a standard statewide code. One exception to this is the Charge table. There are local ordinances that courts will need to enter. This will be accomplished by sending a record in the Charge lookup table.

The statewide codes for table values can be found at:

Codes are being updated. New link will be provided as soon as possible.

The statewide codes for the violation standardization table for ARS codes is located at:

Codes are being updated. New link will be provided as soon as possible.

The following tables are tables with limited data elements.

Table: Court Type Lookup Table

Court Type	Court Type Description
A	Appellate
J	Justice of the Peace
M	Municipal
S	Superior
X	Unknown

Table: Case Category Lookup Table

Limited Jurisdiction Courts

Case Category	Case Category Description
AD	ADOPTION
BB	BAIL BDMN
CP	CIV PNLTY
CR	CRIMINAL FARE Eligible
CV	CIVIL
DN	DMD NOTICE
DO	DOM REL
IS	INT COMPCT
JA	JUV ABORT
JD	JUV DEP
JE	JUV EMANC
JS	JPSF
JV	JUV DEL
LC	LOWERCOURT
MA	MINR ABORT
MH	MNTL HLTH
MI	MISC FEES
ML	MARR LICNS
NA	NOTARY APL
NC	NONCR ORD FARE Eligible
OP	OTHR PROCD
PA	PIC – ACT
PB	PROBATE
PK	PARKING FARE Eligible
PS	PRCS SRVR
PW	PWR OF ATT
SE	SPT ENFRMT
SV	SEVERANCE
SW	SRCH WARR
TR	TRAFFIC FARE Eligible

Table: Party Type Lookup Table

Party Type	Party Type Description
?	Unknown
A	APPELLANT
B	APPELLEE
C	CONSERVATOR
D	DEFNDT/RESPNDT
E	THIRD PARTY DEF
F	APPLICANT
G	GUARDIAN
H	GRDN AD LITEM
I	INTERESTED PRTY
J	CO-DEFENDANT
K	CLMNT/COMPLMNT
L	ADULT
M	MINOR
N	INTERVENOR
P	PLNTIF/PETITNER
Q	THRD PRTY PLNTF
R	PERS REPRESENTVE
T	TRUSTEE
U	DECEDENT
V	VICTIM
X	OTHER
Y	ATTORNEY
Z	BONDSMAN

Table: Class of Offense Lookup Table

F	Felony
F1	Felony 1
F2	Felony 2
F3	Felony 3
F4	Felony 4
F5	Felony 5
F6	Felony 6
M	Misdemeanor
M1	Misdemeanor 1
M2	Misdemeanor 2
M3	Misdemeanor 3
FM	Felony / Misdemeanor
PO	Petty Offense
T1	Traffic
NC	Non Criminal (Parking / Civil)
N	None
UN	Unclassified

→ Note: For AZTEC courts, T1 to T6 will be considered 'TR' Class of Offense

Table: Charge Case Type Lookup Table

Case Type	Case Type Description
???	Unknown
AD1	ADOPTION
AD2	ADOPTION CERTIFICATION
AD4	ADOPTION - DES
AD5	ADOPTION - PRIVATE AGENCY
AD6	ADOPTION - PRIVATE ATTORNEY
AD7	ADOPTION - PRO PER
AD8	ADOPTION - COUNTY ATTORNEY
AD9	ADOPTION - OTHER
BB1	BAIL BONDSMAN
C01	TORT MV-PERSONAL INJURY
C02	TORT MV-PROPERTY DAMAGE
C03	TORT MV-DEATH
C11	TORT NMV-ASSAULT & BATTERY
C12	TORT NMV-LIBEL & SLANDER
C13	TORT NMV-NEGLIGENCE
C14	TORT NMV-FALSE IMPRISONMENT
C15	TORT NMV-PERSONAL INJURY
C16	TORT NMV-PROPERTY DAMAGE
C17	TORT NMV-CIVIL FRAUD
C18	TORT NMV-OTHER
C19	PRODUCT LIABILITY
C21	MED MAL-PHYSICIAN-M.D.
C22	MED MAL-PHYSICIAN-D.O.
C23	MED MAL-HOSPITAL
C24	MED MAL-OTHER

C31	CONTRACT-ACCOUNT(OPEN/STATED)
C32	CONTRACT-PROMISSORY NOTE
C41	NCC-SPECIAL ACTION
C42	NCC-ESTABLISHMENT OF IDENTITY
C43	NCC-CHANGE OF NAME
C44	NCC-TRANSCRIPT OF JUDGMENT
C45	NCC-FOREIGN JUDGMENT
C46	NCC-DECLATORY JUDGMENT
C47	NCC-PEACE BOND/OTHER INJUNCTIO
C48	NCC-HABEAS CORPUS
C50	NCC-RESTORATION/CV RIGHTS FED
C52	NCC-SEIZED VEHICLE
C53	NCC-SEIZED CASH
C54	NCC-SEIZED OTHER
C56	NCC-OTHER
C60	TAX APPEAL (SUPERIOR COURT)
C61	WATER RIGHTS
C62	INJUNCTION AGAINST HARASSMENT
C63	ADMIN BOARD/COMMISSION REVIEW
C64	INJ AGAINST WORKPLACE HARASS
C71	LCA-NON CRIM LOCAL ORD JP
C72	LCA-NON CRIM LOCAL ORD MUNI
C73	LCA-CIVIL SUITS
C74	LCA-CIVIL LANDLORD-TENANT
C80	REAL PROP-FORECLOSURE
C81	REAL PROP-FORCIBLE DETAINER
C82	REAL PROP-CONDEMN/EMINENT DOMA
C83	REAL PROP-QUIET TITLE
C84	REAL PROP-PARTITION
C85	REAL PROP-REPLEVIN
C86	REAL PROP-RECEIVERSHIP
C87	REAL PROP-OTHER
CF1	CRIMINAL FELONY
CM1	CRIMINAL MISDEMEANOR
CRF	CRIMINAL FTA
CV1	LJ CIVIL-SMALL CLAIMS
CV2	LJ CIVIL-\$1500 OR LESS
CV3	LJ CIVIL-MORE THAN \$1500
CV4	LJ CIVIL-FORCIBLE DETAINER
D01	DR-DISSOLUTION WITH CHILDREN
D02	DR-DISSOLUTION W/O CHILDREN
D11	DR-LEGAL SEPARATION
D12	DR-PATERNITY/MATERNITY
D13	DR-ANNULMENT
D14	DR-CUSTODY
D15	DR-ORDER OF PROTECTION
D16	DR-FOREIGN JUDGMENT OTR TN SUP
D17	DR-UIFSA/URESA RESP (DOM DEC)
D18	DR-OUT-OF-COUNTY JUDGMENT
D19	DR-ESTABLISH SUPPORT

D20	DR-HABEAS CORPUS (CUSTODY)
D21	DR-VISITATION
D22	DR-SUPPORT/COMPLAINTS
D23	DR-UIFSA/URESA INITIATION
D30	DR-OTHER DOMESTIC RELATIONS
D40	DR-EMERGENCY ORD OF PROTECTION
DN1	DEMAND FOR NOTICE
ES1	ESCHEAT UNCL MNY/SALE UNCL PRO
IC1	INTER CNTY TRNSFR-PROBATION
IS1	INTERSTATE COMPACT - PROBATION
JE1	MINOR EMANCIPATION
JV1	JUV-DELINQUENT
JV2	JUV-INCORRIGIBLE
JV3	JUV-DELINQUENT/INCORRIGIBLE
JV4	JUV-DEPENDENCY
JV5	JUV-ADOPTION-PETITION (MINOR)
JV6	JUV-ADOPTION-CERTIFICATION
JV7	JUV-SVRNC/TRMNTN PAR RIGHTS
JV9	JUV-OTHER
MA1	MINOR ABORTION
MH1	MEN HLTH (CIVIL)-ADULT
MH2	MEN HLTH (CIVIL)-JUVENILE
MH3	MEN HLTH (CIVIL)-DOC/ADULT
MI1	MISCELLANEOUS
ML1	MARRIAGE LICENSE
NA1	NOTARY APPLICATION
NC1	LJ-NON-CRIM ORD-NON-PARKING
NC2	LJ-NON-CRIM ORD-PARKING
NC3	STATE: NON CRIM/NON CIVIL
P01	PB-CONSERVATORSHIP-MINOR
P02	PB-CONSERVATORSHIP-INCAP ADULT
P11	PB-GUARDIANSHIP-MINOR
P12	PB-GUARDIANSHIP-INCAPAC ADULT
P21	PB-GUARDIAN/CONSERVATOR-MINOR
P22	PB-GUARD/CONSER INCAPAC ADULT
P31	PB-ESTATE-ANCILLARY ADMIN
P32	PB-EST-AFFIDAVIT OF SUCCESSION
P33	PB-ESTATE-TRUST ADMINISTRATION
P34	PB-ESTATE-FORMAL PROBATE
P35	PB-ESTATE-INFORMAL PROBATE
P36	PB-ESTATE-SUPERVISED ADMIN
P37	PB-ESTATE-UNSUPERVISED ADMIN
P38	PB-ESTATE-OTHER
P41	PB-ADOPTION PET/AGRMT (ADULT)
PP1	PASSPORT
PRC	PROBATION INTERSTATE COMPACT
PS1	PROCESS SERVER APPLICATION
PW1	POWER OF ATTORNEY
R00	CRIM-CH11 HOMICIDE
R01	CRIM-CH12 ASSULT/RELATED OFFEN

R02	CRIM-CH13 KIDNAP/RELATED OFF
R03	CRIM-CH14 SEXUAL OFFENSES
R04	CRIM-CH15 CRIM TRESP & BURGLAR
R05	CRIM-CH16 CRIM DAMAGE TO PROP
R06	CRIM-CH17 ARSON
R07	CRIM-CH18 THEFT
R08	CRIM-CH19 ROBBERY
R09	CRIM-CH20 FORGERY & RELATED
R10	CRIM-CH21 CREDIT CARD FRAUD
R11	CRIM-CH22 BUS & COMERCIAL FRAU
R12	CRIM-CH23 ORGANIZED CRIME
R13	CRIM-CH24 OBST OF PUBLIC ADMIN
R14	CRIM-CH25 ESC & REL OFFENSES
R15	CRIM-CH26 BRIBERY
R16	CRIM-CH27 PERJURY & REL OFF
R17	CRIM-CH28 INTRFRNC W/JUD PROC
R18	CRIM-CH29 OFF AGNST PUBLIC ORD
R19	CRIM-CH30 EAVESDROPPING & COMM
R20	CRIM-CH31 WEAPONS & EXPLOSIVES
R21	CRIM-CH32 PROSTITUTION
R22	CRIM-CH33 GAMBLING
R23	CRIM-CH34/34.1 DRUGS & CONT SU
R24	CRIM-CH35 OBSCENITY
R25	CRIM-CH35.1 SEXL EXP OF CHILD
R26	CRIM-CH36 FAMILY OFFENSES
R27	CRIM-CH37/CH38 MISC OFFENSES
R28	CRIM-TITLE 28 DUI/TRANSPORTATN
R29	CRIM-TITLE 17 GAME/FISH
R30	CRIM-TITLE 3 AG & LIVESTOCK
R31	LCA-CRIM NONTRAFFIC-JP
R32	LCA-CRIM NON-TRAFFIC-MUNI
R33	CRIM-TITLE 32 PROFESSIONS/OCCU
R34	CRIM-TITLE 31 JAILS
R35	CRIM-TITLE 12 CRTS & CIV PROCD
R36	CRIM-TITLE 16 ELECTION VIO
R37	CRIM-CH38/ART 5 EXTRADITION
R40	CRIM-TITLE 35 PUBLIC FINANCES
R41	CRIM-TITLE 4 ALCOHOLIC BEVERAG
R42	CRIM-TITLE 49 ENVIRONMENT
R44	CRIM-TITLE 44 TRADE/COMMERCE
R45	CRIM-TITLE 5 AMUSEMENTS/SPORTS
R46	CRIM-TITLE 46 WELFARE
R47	CRIM-TITLE 6 BANKS/FINAN INST
R48	CRIM-TITLE 9 CITIES/TOWNS
R50	CRIM-RULE 11 COM/SAN FM LJ CTS
R81	CRIM-TITLE 10 CORP & ASSOC
R82	CRIM-TITLE 11 COUNTIES
R83	CRIM-TITLE 15 EDUCATION
R84	CRIM-TITLE 33 PROPERTY
R85	CRIM-TITLE 19 INIT/REFRNDM/REC

R86	CRIM-TITLE 20 INSURANCE
R87	CRIM-TITLE 22 NON-RECORD COURT
R88	CRIM-TITLE 23 LABOR
R89	TITLE 4 ALCOHOLIC BEVERAGES
R90	CRIM-TITLE 36 PUBLIC HEALTH
R91	CRIM-TITLE 25 DOMESTIC RELATN
R92	CRIM-TITLE 41 STATE
R95	CRIM-OTHER ORDERS-PHOTO LINEUP
R96	CRIM-OTHER ORDERS-WIRETAP
R97	CRIM-OTHER ORDERS-EXEMPLARS
R98	CRIM-CH38/ART8 SEARCH WARRANT
R99	CRIM-OTHER
ST1	AZ TAX COURT-SMALL CLAIMS
SW1	SEARCH WARRANT
T01	LCA-CRIM TR-JUSTICE OF PEACE
T02	LCA-CRIM TR-MUNICIPAL COURT
T11	LCA-CIVIL TR-JUSTICE OF PEACE
T12	LCA-CIVIL TR-MUNICIPAL COURT
TR1	LJ-CIVIL TR-OTHER
TR2	LJ-CRIM TR-OTHER
TR3	LJ-CRIM TR-SERIOUS VIOLATION
TR4	LJ-CRIM TR-DUI
TR5	LJ-CIV TR SPEED (28-702.01,04)
TR6	CRIM TRAFFIC FTA
TX1	AZ TAX COURT-CASE OF RECORD
XXX	None

Table: Citation Type Lookup Table

Citation Type	Citation Type Description
A	ARIZONA AGENCY
B	BOARD - LIQUOR LICENSE
C	CITY POLICE
D	DEPARTMENT OF PUBLIC SAFETY
E	AGRICULTURE
F	FIRE MARSHALL
G	GAME AND FISH
H	HEALTH DEPARTMENT
L	LIVESTOCK
M	MOTOR VEHICLE DIVISION
N	NON-ARIZONA AGENCY
P	PLANNING AND ZONING
Q	ANIMAL CONTROL
R	REGISTRAR OF CONTRACTORS
S	SHERIFF'S DEPARTMENT
T	INDIAN TRIBAL POLICE
U	US AGENCY (BORDER PATROL, ETC)
X	UNKNOWN
0	NONE

Table: Disposition Code Lookup Table

Disposition Code	Disposition Description
00	CORRECT INVALID DISPOSITION
10	PLEA GUILTY/RESP SENT SUSPEND
11	PLEA GUILTY/RESP SENT IMPOSED
12	BAIL/DEPOSIT GIVEN/FORFEITED
20	JDGMT GUILTY/RESP SENT SUSPEND
21	JDGMT GUILTY/RESP SENT IMPOSED
22	JDGMT GUILTY RESP/BAIL TO FINE
30	JDGMT ACQUITTAL/NOT RESP
43	COMPL DISMISSED BY COURT
44	COMPL DISMISSED BY CTY ATTY
45	COMPL DISMISSED BY OFFICER
54	NRVC SUSPENSION
55	FAILURE TO PAY
56	FTA WARRANT ISSUED
57	FTA NO WARRANT/LICENSE SUSPND
58	FAILURE TO APPEAR
59	JUDGMENT/CONVICTION SET ASIDE
60	DEF APPEARS/FTA SATISFIED
63	DEF TO ANOTHER COURT FOR PROS
64	DEF TO ANOTHER COURT FOR PROS
65	DEF TO ANOTHER OFFCR FOR PROS
67	CHARGE AMENDED
70	APPEAL
71	COURT PURGE
76	SET ASIDE PURSUANT TO 13-907
90	DEFENSIVE DRIVING/DISM NO MVD
91	GUILTY/RESPONSIBLE/NO MVD RPT
99	TRAFFIC OTHER/NO MVD RPT
A1	APPEAL ABANDONED
A2	APPEAL REVIEW JDGMT & ORDER
AC	ACQUITTED/NOT GUILTY
AF	APPEAL AFFIRMED
AR	APPEAL AFFIRMED/REMANDED
C1	JDGMT/DECR/ORD CIV/DR
C2	JDGMT/DECR/ORD CIV/DR DEFAULT
C3	JDGMT/DECR/ORD CIV/DR SUM/DECL
C4	JDGMT/DECR/ORD CIV/DR STIP/ACP
CD	COURT DISMISSAL
D1	COURT DISMISSAL WITH PREJUDICE
D2	COURT DISMISSAL W/O PREJUDICE
D3	OTHER DISMISSAL WITH PREJUDICE
D4	OTHER DISMISSAL W/O PREJUDICE
DP	DEFERRED PROSECUTION
DS	DEFERRED SENTENCING
GG	GUILTY
GI	GUILTY BUT INSANE

H1	INJUN/ORDR PROTECT/PET GRANTED
H2	INJUN/ORDR PROTECT/PET DENIED
K1	ADOPTION ORDER - MINOR
K2	ADJUDICATED DEPENDENT
K3	PARENTAL RIGHTS SEVERED
M1	CONSOLIDATED (NON-CRIMINAL)
M2	SUPERVENING INDICTMENT
M3	BOUND OVER TO SUPERIOR COURT
M4	CERTIFIED TO MISDEMEANOR
M5	NO PROBABLE CAUSE
NF	NO COMPLAINT FILED
NP	NOLO CONTENDERE PLEA
NR	NOT REFERRED FOR PROSECUTION
P1	SETTLE/DISCHARGE PERSONAL REP
P2	GUARDIAN/CONSERV TERMINATED
P3	ORDER FOR TREATMENT
P4	ADOPTION ORDER ADULT
PM	PENDING/MENTAL INCOMPETENCE
PO	PLEA TO OTHER CHARGES
R1	REMANDED TO ANOTHER COURT
R2	RELEASED TO ANOTHER COUNTY
R3	RELEASED/DIFFERENT CTY OFFICER
RI	NOT RESPONS/REASON INSANE
RR	APPEAL REVERSED/REMANDED
RV	APPEAL RVRSD/CONV OVERTURNED
SM	APPEAL - SENTENCE MODIFIED
T1	TRANSFER - CHANGE OF VENUE
T2	TRANSFER - CHANGE JURISDICTION
T3	TRANSFER - BRANCH COURT
T4	TRANSFER - REASSIGN JUV COURT
T5	TRANSFER - RETN NEW PROB CAUSE
T6	TRANSFER - RETN DEF COMP/SANE
T7	FUGITIVE EXTRADICTED
T8	FUGITIVE NOT EXTRADICTED
X1	INCOMPET/INSANITY COMMITMENT
X2	INCOMPET/INSANITY - PSY REV BD
X3	INCOMPET/INSANITY - RELEASE
XX	None
Z1	OTHER DISPOSITION

Table: Sentence Code Lookup Table

Sentence Code	Sentence Code Description
??	Unknown
A	DEATH SENTENCE
B	DEPARTMENT OF CORRECTIONS
C	DEPT OF CORRECTIONS W/MONETARY
D	COUNTY JAIL
E	COUNTY JAIL W/MONETARY
F	MONETARY OR PWS ONLY
G	PROBATION ONLY
H	PROBATION & MONETARY/PWS ONLY
I	PROBATION & COUNTY JAIL
J	PROB & COUNTY JAIL W/MONETARY
K	PROBATION & DOC
L	PROBATION & DOC W/MONETARY
M	SUSPENDED
N	AZ DEPT OF JUV CORRECTIONS
O	AZ DEPT OF JUV CORRECTIONS W/\$
P	NON-SUPERVISED PROBATION
Q	MONETARY ONLY
R	DIVERSION PROGRAM ONLY
S	COMMUNITY SERVICE ONLY
U	COMMITTED: MNTL HLTH FACILITY
XX	None

This list states the **country names** (official short names **in English**) in alphabetical order as given in ISO 3166-1 **and** the corresponding **ISO 3166-1-alpha-2 code elements**.

This list is updated whenever a change to the official code list in ISO 3166-1 is effected by the ISO 3166/MA.

It lists 239 official short names and code elements.

Table: Country Code Lookup Table

AFGHANISTAN	AF
ALBANIA	AL
ALGERIA	DZ
AMERICAN SAMOA	AS
ANDORRA	AD
ANGOLA	AO
ANGUILLA	AI
ANTARCTICA	AQ
ANTIGUA AND BARBUDA	AG
ARGENTINA	AR
ARMENIA	AM
ARUBA	AW
AUSTRALIA	AU
AUSTRIA	AT
AZERBAIJAN	AZ
BAHAMAS	BS
BAHRAIN	BH
BANGLADESH	BD
BARBADOS	BB
BELARUS	BY
BELGIUM	BE
BELIZE	BZ
BENIN	BJ
BERMUDA	BM
BHUTAN	BT
BOLIVIA	BO
BOSNIA AND HERZEGOVINA	BA
BOTSWANA	BW
BOUVET ISLAND	BV
BRAZIL	BR
BRITISH INDIAN OCEAN TERRITORY	IO
BRUNEI DARUSSALAM	BN
BULGARIA	BG
BURKINA FASO	BF
BURUNDI	BI
CAMBODIA	KH
CAMEROON	CM
CANADA	CA

CAPE VERDE	CV
CAYMAN ISLANDS	KY
CENTRAL AFRICAN REPUBLIC	CF
CHAD	TD
CHILE	CL
CHINA	CN
CHRISTMAS ISLAND	CX
COCOS (KEELING) ISLANDS	CC
COLOMBIA	CO
COMOROS	KM
CONGO	CG
CONGO, THE DEMOCRATIC REPUBLIC OF THE	CD
COOK ISLANDS	CK
COSTA RICA	CR
CÔTE D'IVOIRE	CI
CROATIA	HR
CUBA	CU
CYPRUS	CY
CZECH REPUBLIC	CZ
DENMARK	DK
DJIBOUTI	DJ
DOMINICA	DM
DOMINICAN REPUBLIC	DO
ECUADOR	EC
EGYPT	EG
EL SALVADOR	SV
EQUATORIAL GUINEA	GQ
ERITREA	ER
ESTONIA	EE
ETHIOPIA	ET
FALKLAND ISLANDS (MALVINAS)	FK
FAROE ISLANDS	FO
FIJI	FJ
FINLAND	FI
FRANCE	FR
FRENCH GUIANA	GF
FRENCH POLYNESIA	PF
FRENCH SOUTHERN TERRITORIES	TF
GABON	GA
GAMBIA	GM
GEORGIA	GE
GERMANY	DE
GHANA	GH
GIBRALTAR	GI
GREECE	GR
GREENLAND	GL
GRENADA	GD

GUADELOUPE	GP
GUAM	GU
GUATEMALA	GT
GUINEA	GN
GUINEA-BISSAU	GW
GUYANA	GY
HAITI	HT
HEARD ISLAND AND MCDONALD ISLANDS	HM
HOLY SEE (VATICAN CITY STATE)	VA
HONDURAS	HN
HONG KONG	HK
HUNGARY	HU
ICELAND	IS
INDIA	IN
INDONESIA	ID
IRAN, ISLAMIC REPUBLIC OF	IR
IRAQ	IQ
IRELAND	IE
ISRAEL	IL
ITALY	IT
JAMAICA	JM
JAPAN	JP
JORDAN	JO
KAZAKHSTAN	KZ
KENYA	KE
KIRIBATI	KI
KOREA, DEMOCRATIC PEOPLE'S REPUBLIC OF	KP
KOREA, REPUBLIC OF	KR
KUWAIT	KW
KYRGYZSTAN	KG
LAO PEOPLE'S DEMOCRATIC REPUBLIC	LA
LATVIA	LV
LEBANON	LB
LESOTHO	LS
LIBERIA	LR
LIBYAN ARAB JAMAHIRIYA	LY
LIECHTENSTEIN	LI
LITHUANIA	LT
LUXEMBOURG	LU
MACAO	MO
MACEDONIA, THE FORMER YUGOSLAV REPUBLIC OF	MK
MADAGASCAR	MG
MALAWI	MW
MALAYSIA	MY
MALDIVES	MV
MALI	ML
MALTA	MT

MARSHALL ISLANDS	MH
MARTINIQUE	MQ
MAURITANIA	MR
MAURITIUS	MU
MAYOTTE	YT
MEXICO	MX
MICRONESIA, FEDERATED STATES OF	FM
MOLDOVA, REPUBLIC OF	MD
MONACO	MC
MONGOLIA	MN
MONTserrat	MS
MOROCCO	MA
MOZAMBIQUE	MZ
MYANMAR	MM
NAMIBIA	NA
NAURU	NR
NEPAL	NP
NETHERLANDS	NL
NETHERLANDS ANTILLES	AN
NEW CALEDONIA	NC
NEW ZEALAND	NZ
NICARAGUA	NI
NIGER	NE
NIGERIA	NG
NIUE	NU
NORFOLK ISLAND	NF
NORTHERN MARIANA ISLANDS	MP
NORWAY	NO
OMAN	OM
PAKISTAN	PK
PALAU	PW
PALESTINIAN TERRITORY, OCCUPIED	PS
PANAMA	PA
PAPUA NEW GUINEA	PG
PARAGUAY	PY
PERU	PE
PHILIPPINES	PH
PITCAIRN	PN
POLAND	PL
PORTUGAL	PT
PUERTO RICO	PR
QATAR	QA
RÉUNION	RE
ROMANIA	RO
RUSSIAN FEDERATION	RU
RWANDA	RW
SAINT HELENA	SH

SAINT KITTS AND NEVIS	KN
SAINT LUCIA	LC
SAINT PIERRE AND MIQUELON	PM
SAINT VINCENT AND THE GRENADINES	VC
SAMOA	WS
SAN MARINO	SM
SAO TOME AND PRINCIPE	ST
SAUDI ARABIA	SA
SENEGAL	SN
SERBIA AND MONTENEGRO	CS
SEYCHELLES	SC
SIERRA LEONE	SL
SINGAPORE	SG
SLOVAKIA	SK
SLOVENIA	SI
SOLOMON ISLANDS	SB
SOMALIA	SO
SOUTH AFRICA	ZA
SOUTH GEORGIA AND THE SOUTH SANDWICH ISLANDS	GS
SPAIN	ES
SRI LANKA	LK
SUDAN	SD
SURINAME	SR
SVALBARD AND JAN MAYEN	SJ
SWAZILAND	SZ
SWEDEN	SE
SWITZERLAND	CH
SYRIAN ARAB REPUBLIC	SY
TAIWAN, PROVINCE OF CHINA	TW
TAJIKISTAN	TJ
TANZANIA, UNITED REPUBLIC OF	TZ
THAILAND	TH
TIMOR-LESTE	TL
TOGO	TG
TOKELAU	TK
TONGA	TO
TRINIDAD AND TOBAGO	TT
TUNISIA	TN
TURKEY	TR
TURKMENISTAN	TM
TURKS AND CAICOS ISLANDS	TC
TUVALU	TV
UGANDA	UG
UKRAINE	UA
UNITED ARAB EMIRATES	AE
UNITED KINGDOM	GB
UNITED STATES	US

UNITED STATES MINOR OUTLYING ISLANDS	UM
URUGUAY	UY
UZBEKISTAN	UZ
VANUATU	VU
Vatican City State see HOLY SEE	
VENEZUELA	VE
VIET NAM	VN
VIRGIN ISLANDS, BRITISH	VG
VIRGIN ISLANDS, U.S.	VI
WALLIS AND FUTUNA	WF
WESTERN SAHARA	EH
YEMEN	YE
Zaire see CONGO, THE DEMOCRATIC REPUBLIC OF THE	
ZAMBIA	ZM
ZIMBABWE	ZW